

Glatz Black Angus



SA Cattleman's Bull Sale

• Wednesday 19th February 2025 at 11am •
Avenue Range, SA



Ellingson Rangeland

“Ellingson Rangeland represents one of the highest credentialled Angus herds in the US. Ellingson’s Angus are renowned for breeding structurally sound bulls ideal for self-replacing cow herds. Rangeland sons excel for Calving Ease, Growth, Structural Soundness and Maternal Traits. Rangeland’s first sons were extremely sought after in the 2023 Ellingson sale selling to \$160,000.”



Like us on Facebook
Glatz Black Angus



Glatz Black Angus

SA Cattleman's Bull Sale

- Wednesday 19th February 2025 at 11am •
On Property, Avenue Range, SA

CONTACTS

Ben and Samantha Glatz Mobile 0407 712 455
Email glatzblackangus@gmail.com
Website www.glatzsblackangus.com



Trevor Wiseman	0427 237 369
Gordon Wood	0408 813 215
Richard Miller	0428 849 327
Andrew Wilson	0439 354 228
Jeff Olafson	0428 283 721
Sam Savin	0407 939 910
Rob Aldridge	0438 656 528



AuctionsPlus

DISCLAIMER

Whilst all due care and attention has been paid to accuracy in the compilation of this catalogue, neither the vendors nor the selling agents or the representative(s) thereof assume any responsibility whatsoever for the correctness, use or interpretation of the information in this sale catalogue.



Welcome

We invite you to attend our annual SA Cattleman's Bull Sale for 2025.

Our family graciously acknowledge the support and success of our 2024 autumn and spring bull sales.

Here at Glatz Black Angus, we offer problem-free bulls, brand marketability, consistency, post-sale service and industry-grade acclaim. These are the sound reasons why cattle breeders look to Glatz Black Angus as their preferred genetic partner.

Glatz bulls are generationally bred to be more robust, muscular and profit driven in comparison to some Angus cattle of today. Ideal for self-replacing weaner producers whose calves are finished on grass or short-term grain.

Progeny from Glatz Black Angus bulls reach premium finished carcass weights of 300-350kg in rapid time, on grass or short-term grain. This is what sets Glatz Black Angus bulls apart.

Glatz genetics can advance your self-replacing female herd. Resulting in replacement females that perform and go the distance under heavy stocking rates. Medium framed, easy-keeping and productive. For generations, there's been no compromise made on fertility and production traits, such as scrotal size, milk, and docility. Strict selection for type and structural conformation are non-negotiable.

Our cattle are endorsed by generations of deliberate breeding objectives, driven by Profitability, Predictability and Purpose, resulting in Problem Free Angus bulls.

All Glatz bulls are backed by our own industry leading 3 YEAR Guarantee.

In the instance of bull breakdown or misadventure, we provide immediate service and backup.

The bulls catalogued for this 2025 SA Cattleman's Bull Sale represent all that we stand for in breeding profitable Angus cattle. A large proportion of the bulls catalogued are suitable for heifer joining.

We invite your inspection at our on property SA Beef Week Open Day, from 9am on Sale Day or at any other time that's convenient.

This sale will be interfaced with AuctionsPlus with live online bidding.

We look forward to seeing you at our sale,
Ben and Samantha Glatz.

Be Angus Be Proud video.





Sale Information

SALE TIME

The sale is scheduled to commence at 11am SA daylight savings time on Wednesday 19th February, 2025. Inspections are welcome from 9am on Sale Day or at any other time that's convenient.

ONLINE BIDDING

The sale will be interfaced with AuctionsPlus.

SA BEEF WEEK

All bulls catalogued for this sale will be available for inspection at SA Beef Week. Tuesday 11th February 2025, 9am-4pm. On property, 2135 Avenue Range Rd, Avenue Range, SA.

SEMEN TESTING

All bulls catalogued for this sale have passed semen testing and morphology criteria, conducted by Nationwide Artificial Breeders. Contact Drew for further information – 0428 925 255.

BULL INSURANCE

Buyers are reminded that any purchases become their responsibility from the fall of the hammer. We strongly recommend that all bulls are comprehensively insured until conclusion of their first mating season.

GENETIC TESTING

All animals catalogued for sale with reasonable likelihood of possessing a copy of the recessive gene for Arthrogyrosis Multiplex (AM), Neuropathic Hydrocephalus (NH), Contractural Arachnodactyly (CA) or Developmental Duplication (DD) have been DNA tested to determine their genetic status. The genetic status of every animal is clearly marked in this catalogue.

AMF, NHF, CAF, DDF = Tested Free.

AMFU, NHFU, CAFU, DDFU = Free based on pedigree, but untested.

AMC, NHC, CAC, DDC = Tested Carrier

If you have any questions in relation to genetic testing, please feel free to discuss them with us.

HERD HEALTH

All bulls have been vaccinated and boosted with 7in1 and Pestigard. Furthermore all sale bulls have been treated with Mineral Solutions and will be drenched prior to sale. All breeding age females are vaccinated with Pestigard and 7 in 1 annually.

BIOSECURITY

Glatz Black Angus hold current status of J-BAS 6.

THE GLATZ BLACK ANGUS GUARANTEE

All Glatz Black Angus bulls are backed by our own industry leading 3 YEAR GUARANTEE. In the event of a bull proven to be infertile or incapable of natural service the vendor can either offer a suitable replacement if available or issue a credit for future sales. The credit is a pro-rata value of the bull minus the salvage value. The guarantee can only apply if the bulls incapacity is not caused by injury or disease since taking delivery. Any claim must be accompanied by a relevant veterinary certificate. The vendor retains the right to obtain independent veterinary confirmation of any claim. GBA guarantee immediate service and back up if required.

STOCK HANDLING

Glatz Black Angus cattle are always handled with utmost patience and due care. Mustering is generally undertaken with 4 wheel motorbikes. The bulls have been exposed to working dogs.

SEMEN MARKETING RIGHTS

The semen marketing rights for specific lots in this catalogue are to be retained by the vendor. Alterations to these conditions can be negotiated with the vendor prior to the sale.

DELIVERY

The vendor will personally deliver as many of the sale lots as possible, free of charge, to your property. These arrangements can be made after the sale.

REBATE

A 3% rebate is offered to outside agents introducing buyers to the selling agent prior to the sale and settling within 7 days. Outside agents must attend the sale to be eligible.

PHONE BIDDING

Phone bidding will be available for the sale. For further information contact Trevor Wiseman 0427 237 369.

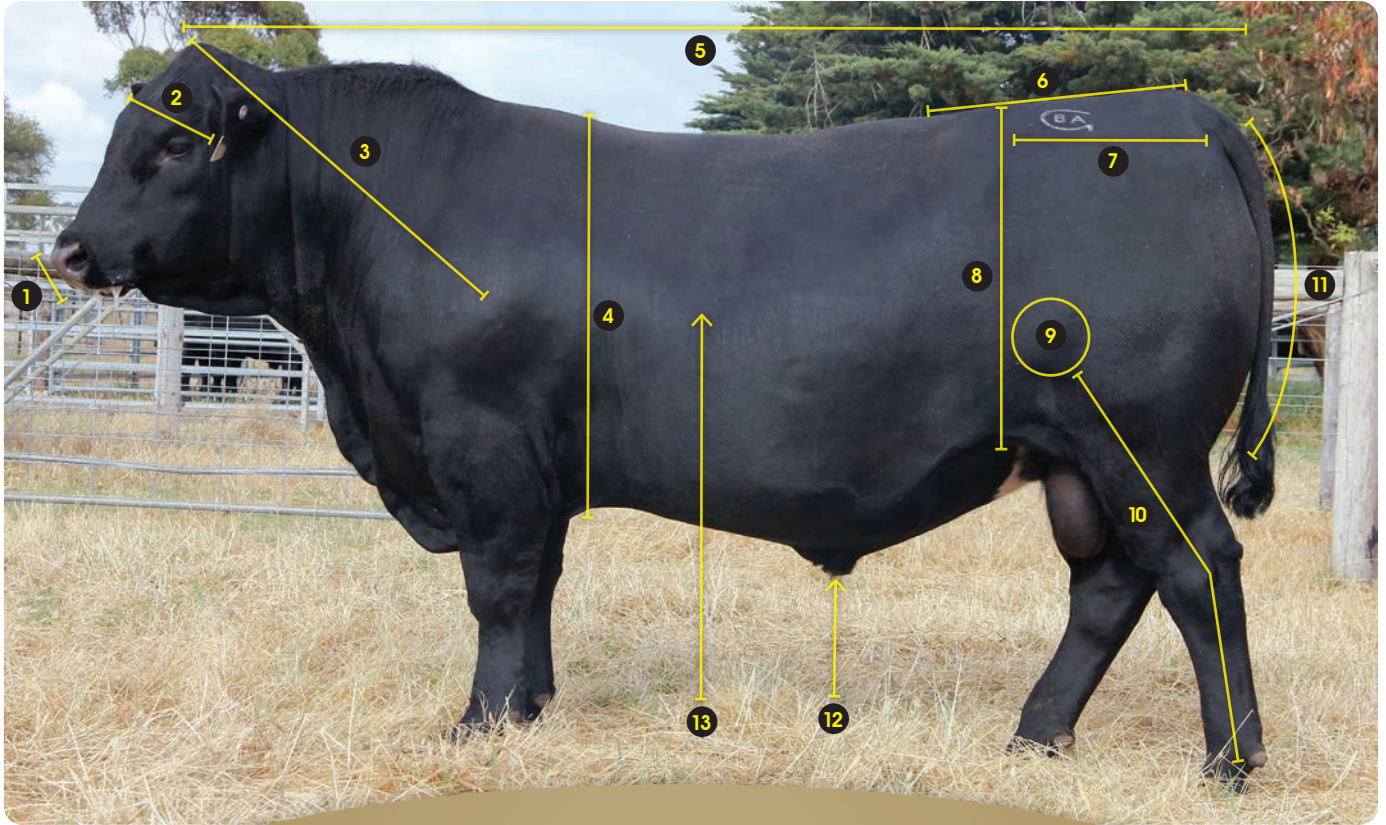
CATERING

Catering and refreshments will be available before and after the sale.

QR CODES

The QR codes in this catalogue can be scanned with your mobile device to play video material of the animal.

“The Ideal Beef Bull”



“A beef animal needs to be sound structured and free in locomotion whilst displaying quality of type. Adhering to these criteria, with some support of performance data (EBV’s) when selecting bulls is best practice. Such practice will reward the profitability and sustainability of your beef breeding business.”

1. Muzzle/Jaw

A wide muzzle and prominent bottom jaw are desirable. These are essential for an animal to forage efficiently. The bottom jaw needs to be prominent from a front view.

2. Head

Width across the eyes can indicate the overall dimension of the animal. A long narrow head is generally attached to a tall and narrow animal. A particularly short and wide head is generally attached to a more moderate animal. Hooding over the eye for protection is favorable.

3. Head Carriage

Well-structured and free moving animals naturally carry their head in a somewhat elevated fashion. In a relaxed stance, these animals can comfortably maintain their ear level equal to or above the top of their shoulder.

4. Chest/Girth

The engine room. Most of the major organs are beneath. A full and deep chest/girth is a true indicator of an animal’s constitution and it’s ability to maintain good condition. The chest/girth should blend into the animal’s dimension, not as a division between the front and rear.

5. Body Length

Length of body increases weight on the scales. Heavy and well-balanced cattle have extra length across all thirds. Nose to shoulder. Shoulder to hip. Hip to pin.

6. Tail Set

A neat tail set is not just an aesthetic preference. A correct tail set should finish off the spine smoothly with minimal deviation, up or down. Higher and more prominent tail sets often coincide with high pin bones, resulting in harder calving females.

7. Hip to Pin

Cattle that are longer and angled correctly from hip to pin have more reproductive area. An angle that is close to level from hip to pin is ideal. A sloping angle from hip to pin is preferred over an increasing angle. It’s not easy for a cow to push a calf up hill.

8. Depth of Flank

The depth of an animal from the hip down to it’s flank is a true indicator of it’s fleshing ability, constitution and dimension. Animals that cut up high in the flank can be harder doing, leaner and not as maternal.

9. Stifle

Bulging of the stifle muscle is an indicator of how much true muscle is within an animal. Heavily muscled bulls when examined from behind exhibit their widest point at the stifle.

10. Rear Legs

Rear leg structure is one of the most critical aspects of working bulls and functional females. Post Legged/Straight Legged bulls have a far greater risk of stifle breakdown and arthritic side effects which often co-inside with steep pastern angle. The ideal skeletal angle from stifle-hock-pastern is around 140 degrees. As this angle becomes straighter with post legged animals, their freedom of movement, suspension in movement and length of stride are compromised.

11. Butt Shape

Roundness of butt is a good indicator of muscularity in bulls. Heavier muscled bulls have an even curve that starts at the pins and continues down deep into the thigh. Lighter muscled bulls will express a straighter curve that does not fill deep into the thigh, regardless of condition. From behind, heavier muscled bulls are widest at the stifle and full between the legs. Lighter muscled bulls are widest at the hips and become narrower down to the thigh.

12. Sheath

Broken penises are the most common breakdown in working bulls. Selecting bulls with tighter and less pendulous sheaths can provide some defense against this. Bulls with tighter and less pendulous sheaths generally have more control during service and are less prone to sheath damage and infections.

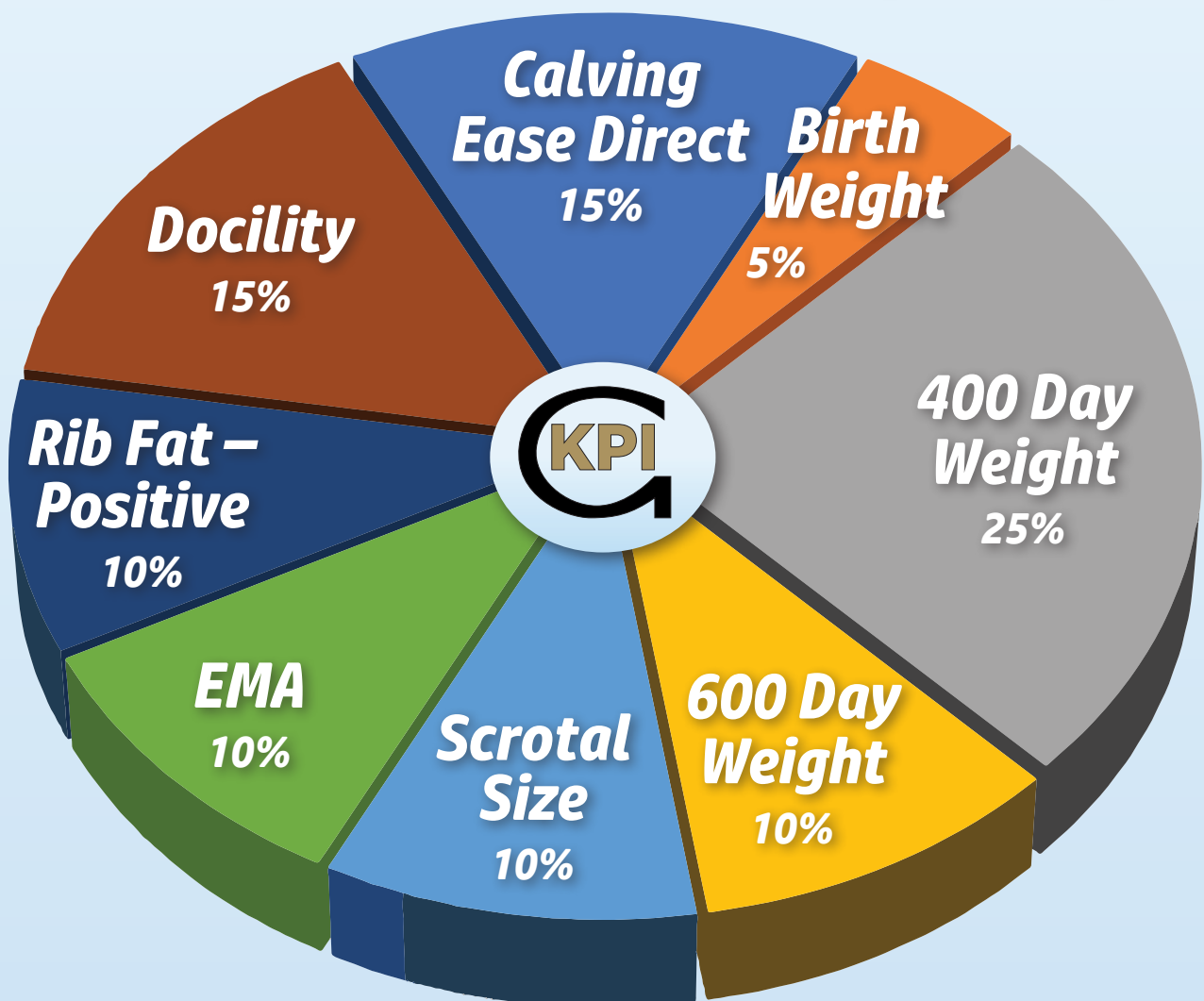
13. Hair Type

Slick, fine hair is more desirable than coarse and sometimes curly hair. Desirable hair type will often correlate to cattle that maintain good health and condition. Slick coated cattle will always present to their best at point of sale.

Glatz's

KPI

Key Performance Indicators



Glatz's "KPI" is an innovative 'EBV Only' analysis. The KPI formula has been developed in house at Glatz Black Angus and describes the sale bulls purely from an EBV standpoint. The key individual traits are combined with each individual trait's level of influence therefore establishing a total KPI value.

The KPI rates all bulls based on the EBV traits of most economic influence to Glatz's southern Australian based clientele. Self-replacing weaner producers whose calves are finished on grass or short-term grain.

Glatz's KPI specifically targets the profitability traits of its commercial cattle clients.

Note – Specific EBV's need to be considered when selecting bulls for heifer joining. We recommend Calving Ease Direct (CED) as the number one EBV of importance with some support from Birth Weight (BW) and Gestation Length (GL).



Reference Sires



Ellingson Rangeland (USA)

- * Top 3% of the breed for Foot Angle and Retail Beef Yield
- * Top 8-27% of the breed for 200 Growth, 400 Growth and 600 Growth
- * Top 14% of the breed for Calving Ease



R605

Sire

Black Angus Geddes R605

- * Top 1% of the breed for Milk
- * Top 6-9% of the breed for Calving Ease, Short Gestation Length and Low Birth Weight
- * Top 7-8% of the breed for 400 Growth, 600 Growth and Carcase Weight



Baldrige 38 Special (USA)

- * Top 6-10% of the breed for 200 Growth, 400 Growth and 600 Growth
- * Top 9-12% of the breed for Foot Scores
- * Top 9% of the breed for Calving



Reference Sire ELLINGSON RANGELAND^{PV} Ident: USA19590500
Born: 24/2/2019 **Genetic Status:** AMF,CAF,DDF,NHF,DWF,MAF,MHF,OHF,OSF,RGF **Mating Type:** Natural **Registration Level:** HBR
 BASIN RAINMAKER P175[#] CONNEALY THUNDER[#]
 BASIN RAINMAKER 2704[#] CTS REMEDY 1T01[#]
 BASIN ERICA 7520 BV[#] CTS 7V03 BELLEMERE MAID 9T02[#]
SIRE: USA17913751 BASIN RAINMAKER 4404^{PV} **DAM: USA19588454 EA EMBLYNETTE 7009[#]**
 BASIN PAYWEIGHT 107S[#] KOUPAL ADVANCE 28[#]
 BASIN JOY 1036[#] EA EMBLYNETTE 5241[#]
 BASIN JOY 566T[#] EA EMBLYNETTE 3249[#]

January 2025 TransTasman Angus Cattle Evaluation																	
TACE	Calving Ease Direct	Calving Ease Daughters	Gestation Length (days)	Birth Weight (kg)	200 Day Weight (kg)	400 Day Weight (kg)	600 Day Weight (kg)	MCW (kg)	Milk (kg)	Scrotal Size (cm)	CWT (kg)	EMA (sq cm)	Rib Fat (mm)	Rump Fat (mm)	RBY %	IMF %	Docility
EBV	+6.9	+7.8	-5.3	+4.3	+63	+104	+130	+112	+21	+2.1	+81	+8.0	-0.6	-3.5	+1.7	+0.0	+26
ACC	77%	57%	97%	97%	95%	95%	94%	90%	85%	93%	85%	85%	83%	82%	77%	85%	91%

Traits Observed: Genomics
 Statistics: Number of Herds: 29, Prog Analysed: 261, Genomic Prog: 104

Ellingson's Angus is one of the highest credentialled Angus herds in the US. They are renowned for breeding structurally sound bulls ideal for self-replacing cow herds. Ellingson Rangeland sons excel for Calving Ease, Growth and Maternal Traits. Glatz Black Angus are offering some of the first Rangeland sons in Australia.

Reference Sire BLACK ANGUS GEDDES R605^{PV} Ident: SJQR605
Born: 16/8/2020 **Genetic Status:** AMF,CAF,DDF,NHF,DWF,MAF,MHF,OHF,OSF,RGF **Mating Type:** AI **Registration Level:** HBR
 SUMMITCREST COMPLETE 1P55[#] AYRVALE BARTEL E7^{PV}
 KM BROKEN BOW 002^{PV} LAWSONS INCREDIBLE H803^{PV}
 SUMMITCREST PRINCESS 0P12[#] LAWSONS DINKY DI E447^{PV}
SIRE: USA18886461 VARILEK GEDDES 7068^{PV} **DAM: VLYL882 LAWSONS INCREDIBLE L882^E**
 VARILEK CONFIDENCE 3004 0[#] TUWHARETOA REGENT D145^{PV}
 VARILEK GOLDIE 5051 506[#] LAWSONS REGENT J1425^{SV}
 VARILEK GOLDIE 3228 314[#] LAWSONS ULTIMATE F672[#]

January 2025 TransTasman Angus Cattle Evaluation																	
TACE	Calving Ease Direct	Calving Ease Daughters	Gestation Length (days)	Birth Weight (kg)	200 Day Weight (kg)	400 Day Weight (kg)	600 Day Weight (kg)	MCW (kg)	Milk (kg)	Scrotal Size (cm)	CWT (kg)	EMA (sq cm)	Rib Fat (mm)	Rump Fat (mm)	RBY %	IMF %	Docility
EBV	+9.1	+5.8	-7.9	+1.5	+59	+112	+147	+121	+31	+1.7	+90	+4.9	-3.1	-1.4	-0.2	+3.2	+9
ACC	73%	60%	90%	91%	90%	88%	90%	85%	77%	86%	78%	76%	77%	77%	71%	79%	80%

Traits Observed: GL,200WT,400WT,SC,Scan(EMA,Rib,Rump,IMF),DOC,Genomics
 Statistics: Number of Herds: 3, Prog Analysed: 64, Genomic Prog: 45

Black Angus Geddes R605 topped Glatz's 2022 SA sale @ \$36,000. The impressive performance of his progeny has now positioned him within the top percentiles of the Angus breed for Calving Ease, Low Birth Weight, Growth, Milk and IMF. His combination of curve bending performance in such good physical type is rare.

Reference Sire BALDRIDGE 38 SPECIAL^{PV} Ident: USA18229487
Born: 13/1/2015 **Genetic Status:** AMF,CAF,DDF,NHF,MAF,OSF,RGF **Mating Type:** Natural **Registration Level:** HBR
 BASIN FRANCHISE P142[#] SITZ UPWARD 307R^{SV}
 EF COMPLEMENT 8088^{PV} STYLES UPGRADE J59[#]
 EF EVERELDA ENTENSE 6117[#] PLAINVIEW LASSIE 71B[#]
SIRE: USA17082311 EF COMMANDO 1366^{PV} **DAM: USA17149410 BALDRIDGE ISABEL Y69[#]**
 B/R AMBUSH 28[#] BALDRIDGE KABOOM K243 KCF[#]
 RIVERBEND YOUNG LUCY W1470[#] BALDRIDGE ISABEL T935[#]
 RIVERBEND YOUNG LUCY T1080[#] BALDRIDGE ISABEL P4527[#]

January 2025 TransTasman Angus Cattle Evaluation																	
TACE	Calving Ease Direct	Calving Ease Daughters	Gestation Length (days)	Birth Weight (kg)	200 Day Weight (kg)	400 Day Weight (kg)	600 Day Weight (kg)	MCW (kg)	Milk (kg)	Scrotal Size (cm)	CWT (kg)	EMA (sq cm)	Rib Fat (mm)	Rump Fat (mm)	RBY %	IMF %	Docility
EBV	+7.8	+5.5	-4.9	+2.6	+65	+110	+143	+109	+19	+2.6	+79	+6.1	+1.3	-1.4	-0.4	+3.1	+16
ACC	94%	82%	99%	99%	98%	98%	98%	97%	97%	98%	94%	92%	92%	92%	88%	92%	99%

Traits Observed: Genomics
 Statistics: Number of Herds: 137, Prog Analysed: 2468, Genomic Prog: 1637

38 Special is one of the best US sires to reach Australian soils in decades. He has been used for 4 x consecutive years at Glatz Black Angus with 2 x outstanding sons retained in 2024. 38 Special progeny offer Calving Ease, Explosive Growth, Sensible Mature Cow Weight, High EMA and particularly good feet. His daughters in production are breeders of the future.

Reference Sires



Rennylea Nationwide

- * Proven mature sire
- * Top 1-2% of the breed for 200 Growth, 400 Growth, 600 Growth and Carcase Weight
- * Top 9% of the breed for Short Gestation Length



Black Angus Beast Mode R70

- * Breed elite Structural Scores
- * Top 6% of the breed for Docility
- * Top 8-14% of the breed for 200 Growth, Retail Beef Yield, Feed Efficiency and Foot Claw Shape



Karoo Main Event (AUS)

- * Top 1% of the breed for Positive Fat
- * Top 2% of the breed for Foot Scores
- * Proven Calving Ease



Reference Sire RENNYLEA NATIONWIDE N432^{PV} Ident: NORN432

Born: 23/7/2017 **Genetic Status:** AMF,CAF,DDF,NHF,DWF,MAF,MHF,OSF,RGF **Mating Type:** ET **Registration Level:** HBR
 G A R NEW DESIGN 5050[#] TE MANIA YORKSHIRE Y437^{PV}
 G A R INGENUITY[#] TE MANIA BERKLEY B1^{PV}
 G A R OBJECTIVE 1067[#] TE MANIA LOWAN Z53[#]
SIRE: USA17366506 H P C A INTENSITY[#] **DAM: NORH367 RENNYLEA H367^{SV}**
 G A R PREDESTINED[#] TE MANIA INFINITY 04 379 AB[#]
 G A R PREDESTINED 287L[#] RENNYLEA F228[#]
 G A R OBJECTIVE 1885[#] RENNYLEA D6[#]

January 2025 TransTasman Angus Cattle Evaluation																	
TACE	Calving Ease Direct	Calving Ease Daughters	Gestation Length (days)	Birth Weight (kg)	200 Day Weight (kg)	400 Day Weight (kg)	600 Day Weight (kg)	MCW (kg)	Milk (kg)	Scrotal Size (cm)	CWT (kg)	EMA (sq cm)	Rib Fat (mm)	Rump Fat (mm)	RBV %	IMF %	Dolcility
EBV	+2.5	+7.2	-7.8	+4.9	+71	+125	+159	+166	+19	+0.7	+103	+5.4	-1.4	-3.0	+0.3	+1.8	+21
ACC	81%	72%	98%	98%	98%	97%	97%	91%	91%	97%	86%	86%	86%	86%	81%	86%	94%

Traits Observed: BWT,200WT,400WT,SC,Scan(EMA,Rib,Rump,IMF),DOC,Structure(Claw Set x 1, Foot Angle x 1),Genomics

Statistics: Number of Herds: 22, Prog Analysed: 819, Genomic Prog: 491

Nationwide was selected for AI use as a proven 6yo sire. He ranks in the Top 1-2% of the Angus breed for 200 Growth, 400 Growth, 600 Growth and Carcase Weight. Positive Calving Ease.

Reference Sire BLACK ANGUS BEAST MODE R70^{SV} Ident: SJQR70

Born: 18/4/2020 **Genetic Status:** AMFU,CAFU,DDFU,NHFU **Mating Type:** AI **Registration Level:** HBR
 C R A BEXTOR 872 5205 608[#] VERMONT DRAMBUIE D057^{PV}
 G A R PROPHET^{SV} BLACK ANGUS BRAMBUIE F197^{SV}
 G A R OBJECTIVE 1885[#] VERMONT MARTINA D442[#]
SIRE: USA17960722 BALDRIDGE BEAST MODE B074^{PV} **DAM: SJQJ257 BLACK ANGUS EMPRESS J257[#]**
 STYLES UPGRADE J59[#] BLACK ANGUS NEWSLINE B37^{SV}
 BALDRIDGE ISABEL Y69[#] BLACK ANGUS EMPRESS F171[#]
 BALDRIDGE ISABEL T935[#] BLACK ANGUS EMPRESS C41[#]

January 2025 TransTasman Angus Cattle Evaluation																	
TACE	Calving Ease Direct	Calving Ease Daughters	Gestation Length (days)	Birth Weight (kg)	200 Day Weight (kg)	400 Day Weight (kg)	600 Day Weight (kg)	MCW (kg)	Milk (kg)	Scrotal Size (cm)	CWT (kg)	EMA (sq cm)	Rib Fat (mm)	Rump Fat (mm)	RBV %	IMF %	Dolcility
EBV	+0.8	+1.6	-1.6	+4.5	+60	+97	+118	+107	+11	+3.5	+63	+7.1	-1.5	-3.3	+1.1	+1.0	+37
ACC	73%	64%	83%	87%	86%	85%	86%	83%	77%	85%	76%	75%	76%	76%	70%	77%	81%

Traits Observed: GL,BWT,200WT,400WT,600WT,SC,Scan(EMA,Rib,Rump,IMF),DOC,Genomics

Statistics: Number of Herds: 1, Prog Analysed: 14, Genomic Prog: 1

Black Angus Beast Mode R70 was retained for his Elite Foot Structure, Powerful Phenotype and Superb Dolcility. Top 6% of the Angus breed for Dolcility. Top 8-14% of the breed for 200 Growth, Retail Beef Yield, Feed Efficiency and Foot Claw Shape.

Reference Sire KAROO MAIN EVENT M367^{SV} Ident: NENM367

Born: 20/9/2016 **Genetic Status:** AMF,CAF,DDF,NHF,RGF **Mating Type:** Natural **Registration Level:** HBR
 SCHURRTOP REALITY X723[#] PAPA EQUATOR 2928[#]
 MATAURI REALITY 839[#] ARDROSSAN EQUATOR A241^{PV}
 MATAURI 06663[#] ARDROSSAN PRINCESS W38^{PV}
SIRE: NJWK12 MILWILLAH REALITY K12^{PV} **DAM: NENG34 KAROO DORIS G34[#]**
 COONAMBLE ELEVATOR E11^{PV} THREE TREES ROCK ON 0059[#]
 MILWILLAH BARUNAH H8^{SV} KAROO DORIS Y137^{SV}
 MILWILLAH BARUNAH A44[#] KAROO FLATS DORIS V96[#]

January 2025 TransTasman Angus Cattle Evaluation																	
TACE	Calving Ease Direct	Calving Ease Daughters	Gestation Length (days)	Birth Weight (kg)	200 Day Weight (kg)	400 Day Weight (kg)	600 Day Weight (kg)	MCW (kg)	Milk (kg)	Scrotal Size (cm)	CWT (kg)	EMA (sq cm)	Rib Fat (mm)	Rump Fat (mm)	RBV %	IMF %	Dolcility
EBV	+4.7	+5.8	-6.4	+2.9	+44	+94	+121	+104	+17	+2.5	+62	+2.1	+2.8	+5.5	-0.9	+3.5	+21
ACC	83%	67%	97%	97%	96%	96%	95%	90%	87%	95%	85%	83%	84%	84%	78%	83%	93%

Traits Observed: CE,BWT,200WT,400WT,600WT,SC,Scan(EMA,Rib,Rump,IMF),Genomics

Statistics: Number of Herds: 4, Prog Analysed: 319, Genomic Prog: 168

Main Event is a proven sire who is breed elite for Foot Structure, Positive Fat and Calving Ease. Main Event sons have sold to \$75,000.Glatz Black Angus have used Main Event for 3 x consecutive years and expect his daughters to perform particularly well when in production.



REFERENCE SIRE

Reference Sire **GLENOCH-JK MAKAHU M602^{SV}** **Ident: QLLM602**
Born: 6/8/2016 **Genetic Status:** AMFU,CAFU,DDFU,NHFU **Mating Type:** AI **Registration Level:** HBR
 SCHURR 77 1346 EXCEL# TUWHARETOA REGENT D145^{PV}
 SCHURRTOP REALITY X723# GLENOCH HINMAN H221^{SV}
 SCHURRTOP 8019 V141# GLENOCH FLOWER D80^{SV}
SIRE: NZE14647008839 MATAURI REALITY 839# **DAM: QLLK615 GLENOCH-JK ANN K615^{SV}**
 TE MANIA ULONG U41^{SV} TE MANIA INFINITY 04 379 AB#
 MATAURI 06663# GLENOCH-JK ANN F606^{SV}
 MATAURI 04456 AB# GLENOCH ANN C102^{SV}

January 2025 TransTasman Angus Cattle Evaluation																	
TACE	Calving Ease Direct	Calving Ease Daughters	Gestation Length (days)	Birth Weight (kg)	200 Day Weight (kg)	400 Day Weight (kg)	600 Day Weight (kg)	MCW (kg)	Milk (kg)	Scrotal Size (cm)	CWT (kg)	EMA (sq cm)	Rib Fat (mm)	Rump Fat (mm)	RBV %	IMF %	Docility
EBV	+1.9	+1.1	-6.4	+5.4	+57	+100	+133	+138	+22	+4.6	+74	+8.0	+0.0	-3.5	+0.7	+1.5	+22
ACC	91%	81%	99%	98%	98%	98%	98%	96%	95%	98%	91%	90%	90%	90%	86%	89%	98%

Traits Observed: GL,CE,BWT,200WT,400WT(x2),SC,Scan(EMA,Rib,Rump,IMF),Genomics
 Statistics: Number of Herds: 88, Prog Analysed: 1262, Genomic Prog: 638

Makahu has been one of Australia's go-to AI bulls for reliability in recent years. All breeders that inspect Makahu himself or his progeny want a piece of him. He is particularly sound and super docile in a large and athletic frame. He ranks in the Top 3% of the Angus breed for Scrotal Size. Top 8-23% of the breed for 200 Growth, 400 Growth, 600 Growth and Foot Scores

Reference Sire **BLACK ANGUS DUSTY MARTIN R608^{PV}** **Ident: SJQR608**
Born: 18/8/2020 **Genetic Status:** AMF,CAF,DDF,NHF,DWF,MAF,MHF,OHF,OSF,RGF **Mating Type:** AI **Registration Level:** HBR
 C R A BEXTOR 872 5205 608# MCC DAYBREAK#
 G A R PROPHET^{SV} G A R ANTICIPATION#
 G A R OBJECTIVE 1885# G A R 5050 NEW DESIGN 0530#
SIRE: QMUM13 CLUNES CROSSING DUSTY M13^{PV} **DAM: YOAL81 Yoothamurra L81^{SV}**
 TE MANIA BERKLEY B1^{PV} LAWSONS DINKY-DI Z191^{SV}
 CLUNES CROSSING GLORIOUS G1^{SV} LAWSONS DINKY DI E1121^{SV}
 TE MANIA LOWAN A1# LAWSONS SOLUTION C987#

January 2025 TransTasman Angus Cattle Evaluation																	
TACE	Calving Ease Direct	Calving Ease Daughters	Gestation Length (days)	Birth Weight (kg)	200 Day Weight (kg)	400 Day Weight (kg)	600 Day Weight (kg)	MCW (kg)	Milk (kg)	Scrotal Size (cm)	CWT (kg)	EMA (sq cm)	Rib Fat (mm)	Rump Fat (mm)	RBV %	IMF %	Docility
EBV	+1.1	+5.8	-7.9	+4.0	+66	+104	+120	+93	+7	+2.1	+63	+11.2	-2.5	-3.5	+0.8	+3.0	+13
ACC	69%	63%	87%	90%	89%	87%	89%	85%	78%	87%	79%	78%	78%	79%	72%	80%	83%

Traits Observed: GL,200WT,400WT,SC,Scan(EMA,Rib,Rump,IMF),DOC,Genomics
 Statistics: Number of Herds: 3, Prog Analysed: 28, Genomic Prog: 4

Black Angus Dusty Martin R608 was retained from our 2020 drop at Glatz Black Angus. His combination of Physical Type and Structure blended with High EMA and IMF is rarely achieved. He has proven to be a good option for heifer matings and mature cows alike. Top 2% of the Angus breed for Angus Breeding Index. Top 4% of the breed for 200 Growth. Top 9% of the breed for Short Gestation Length and EMA

Reference Sire **BLACK ANGUS JONAH LOMU P229^{SV}** **Ident: SJQP229**
Born: 29/4/2018 **Genetic Status:** AMF,CAF,DDF,NHF,DWF,MAF,MHF,OHF,OSF,RGF **Mating Type:** AI **Registration Level:** HBR
 TE MANIA BERKLEY B1^{PV} BASIN FRANCHISE P142#
 TE MANIA EMPEROR E343^{PV} EF COMPLEMENT 8088^{PV}
 TE MANIA LOWAN Z74^{PV} EF EVERELDA ENTENSE 6117#
SIRE: NZE19507013J7 STORTH OAKS JACK J7^{SV} **DAM: SJQL47 BLACK ANGUS DREAM L47#**
 LAWSONS DINKY-DI Z191^{SV} ARDROSSAN EQUATOR A241^{PV}
 STORTH OAKS G183# BLACK ANGUS DREAM J79#
 STORTH OAKS E210# VERMONT DREAM D441#

January 2025 TransTasman Angus Cattle Evaluation																	
TACE	Calving Ease Direct	Calving Ease Daughters	Gestation Length (days)	Birth Weight (kg)	200 Day Weight (kg)	400 Day Weight (kg)	600 Day Weight (kg)	MCW (kg)	Milk (kg)	Scrotal Size (cm)	CWT (kg)	EMA (sq cm)	Rib Fat (mm)	Rump Fat (mm)	RBV %	IMF %	Docility
EBV	+5.9	+5.7	-2.9	+4.3	+59	+104	+136	+116	+17	+3.3	+79	+5.5	-0.5	-1.2	+0.0	+2.2	+36
ACC	75%	64%	85%	93%	92%	91%	93%	87%	82%	90%	82%	81%	81%	82%	76%	82%	89%

Traits Observed: GL,BWT,200WT,400WT,600WT,SC,Scan(EMA,Rib,Rump,IMF),DOC,Genomics
 Statistics: Number of Herds: 2, Prog Analysed: 67, Genomic Prog: 7

Black Angus Jonah Lomu P229 is one Super Impressive Angus Sire. He is highly proven for Positive Calving Ease, Moderate Birth Weight and High Growth. He ranks within the Top 25% of the Angus breed for 12 individual traits.

SA Cattleman's Bull Sale 2025

SALE BULLS

Proper Beef Bulls



Lot 1	BLACK ANGUS 38 SPECIAL U247^{PV}	Ident: SJQ23U247
Born: 13/4/2023	Genetic Status: AMFU,CAFU,DDFU,NHFU	Mating Type: AI
	EF COMPLEMENT 8088 ^{PV}	Registration Level: HBR
	EF COMMANDO 1366 ^{PV}	BOOROOMOOKA HYPERNO H605 ^{PV}
	RIVERBEND YOUNG LUCY W1470 [#]	CLUDEN NEWRY HYPERNO M171 ^{SV}
SIRE: USA18229487 BALDRIDGE 38 SPECIAL ^{PV}		CLUDEN NEWRY ARAWATEA D40 [#]
	STYLES UPGRADE J59 [#]	DAM: THCP262 CLUDEN NEWRY P262 ^{SV}
BALDRIDGE ISABEL Y69 [#]		TUWHARETOA REGENT D145 ^{PV}
BALDRIDGE ISABEL T935 [#]		CLUDEN NEWRY ALICE K68 [#]
		CLUDEN NEWRY ALICE D16 [#]

January 2025 TransTasman Angus Cattle Evaluation																	
TACE	Calving Ease Direct	Calving Ease Daughters	Gestation Length (days)	Birth Weight (kg)	200 Day Weight (kg)	400 Day Weight (kg)	600 Day Weight (kg)	MCW (kg)	Milk (kg)	Scrotal Size (cm)	CWT (kg)	EMA (sq cm)	Rib Fat (mm)	Rump Fat (mm)	RBV %	IMF %	Docility
EBV	+1.8	-1.4	-2.4	+3.8	+54	+103	+139	+115	+18	+3.5	+73	+4.1	+3.5	+3.6	-1.8	+4.1	+19
ACC	70%	62%	83%	82%	84%	82%	82%	80%	77%	80%	73%	72%	72%	72%	64%	76%	78%

Traits Observed: GL,BWT,200WT,600WT,SC,Scan(EMA,Rib),DOC,Genomics

An absolute standout 38 Special son to open with. Black Angus U247's sire, Baldrige 38 Special is one of the best and most reliable AI bulls out of the US in many years. Black Angus 38 Special U247 ranks in the Top 3-5% of the Angus breed for Positive Rib Fat and Positive Rump Fat. Top 13% of the breed for IMF. Top 9% for Foot Scores. Top 9% for Foot Scores. Top 12% for Scrotal Size. Top 13% for 600 Growth. Semen marketing rights retained.



Scrotal Circumference: 46cm



197

Age: 22 months

Purchaser..... \$.....

Lot 2	BLACK ANGUS HARRY TAYLOR U256^{SV}	Ident: SJQ23U256
Born: 14/4/2023	Genetic Status: AMFU,CAFU,DDFU,NHFU	Mating Type: AI
	KM BROKEN BOW 002 ^{PV}	Registration Level: HBR
	VARILEK GEDDES 7068 ^{PV}	PAPA EQUATOR 2928 [#]
	VARILEK GOLDIE 5051 506 [#]	ARDROSSAN EQUATOR A241 ^{PV}
SIRE: SJQR605 BLACK ANGUS GEDDES R605 ^{PV}		ARDROSSAN PRINCESS W38 ^{PV}
	LAWSONS INCREDIBLE H803 ^{PV}	DAM: SJQK161 BLACK ANGUS X56 WILCOOLA K161 [#]
LAWSONS INCREDIBLE L882 ^E		SUMMITCREST HI FLYER 3B18 [#]
LAWSONS REGENT J1425 ^{SV}		ROSSANDER WILCOOLA X56 ^{PV}
		MERRIDALE WILCOOLA Q129+95 [#]

January 2025 TransTasman Angus Cattle Evaluation																	
TACE	Calving Ease Direct	Calving Ease Daughters	Gestation Length (days)	Birth Weight (kg)	200 Day Weight (kg)	400 Day Weight (kg)	600 Day Weight (kg)	MCW (kg)	Milk (kg)	Scrotal Size (cm)	CWT (kg)	EMA (sq cm)	Rib Fat (mm)	Rump Fat (mm)	RBV %	IMF %	Docility
EBV	+6.4	+4.8	-7.4	+3.4	+60	+109	+150	+129	+26	+2.1	+96	+5.5	-3.0	-1.7	+0.4	+2.1	+10
ACC	57%	49%	82%	74%	70%	68%	73%	66%	60%	73%	60%	59%	60%	60%	54%	62%	61%

Traits Observed: GL,BWT,200WT,600WT,SC,Scan(EMA,Rib,Rump,IMF)

Harry Taylor U256 is the first son to sell from our \$36,000 high selling bull in 2022. This fellow offers much more than most would expect in a sire suitable for heifer joining. His maternal lineage is elite - A241 over the great Wilcoola X56. He ranks in the Top 6-15% of the Angus breed for 200 Growth, 400 Growth and 600 Growth. Top 3% for Carcase Weight. Top 5% for Milk. Plus 6.8 Calving Ease Direct.



Scrotal Circumference: 42cm



176

Age: 22 months

Purchaser..... \$.....



Lot 3 BLACK ANGUS RANGELAND U235^{SV} Ident: SJQ23U235

Born: 12/4/2023 **Genetic Status:** AMFU,CAFU,DDFU,NHFU **Mating Type:** AI **Registration Level:** HBR
 BASIN RAINMAKER 2704[#] MATAURI REALITY 839[#]
 BASIN RAINMAKER 4404^{PV} KAROO KNOCKOUT K176^{SV}
 BASIN JOY 1036[#] KAROO JEDDA H213[#]

SIRE: USA19590500 ELLINGSON RANGELAND^{PV} **DAM:** SJQP19 BLACK ANGUS ADELAIDE P19[#]
 CTS REMEDY 1T01[#] LCC NEW STANDARD^{SV}
 EA EMBLYNETTE 7009[#] BLACK ANGUS ADELAIDE K109[#]
 EA EMBLYNETTE 5241[#] BLACK ANGUS ADELAIDE D82[#]

January 2025 TransTasman Angus Cattle Evaluation																	
TACE	Calving Ease Direct	Calving Ease Daughters	Gestation Length (days)	Birth Weight (kg)	200 Day Weight (kg)	400 Day Weight (kg)	600 Day Weight (kg)	MCW (kg)	Milk (kg)	Scrotal Size (cm)	CWT (kg)	EMA (sq cm)	Rib Fat (mm)	Rump Fat (mm)	RBY %	IMF %	Docility
EBV	+4.6	+7.0	-6.1	+5.7	+62	+108	+143	+137	+15	+3.0	+80	+5.8	-1.5	-3.3	+1.2	+0.9	+27
ACC	57%	45%	83%	74%	71%	70%	74%	68%	62%	74%	62%	59%	61%	60%	55%	62%	64%

Traits Observed: GL,BWT,200WT,600WT,SC,Scan(EMA,Rib,Rump,IMF),DOC

Black Angus Rangeland U235 is the highest ranked KPI bull in the sale. First Ellingson Rangeland son to sell. His dam produced Lot 8 in 2024 selling to Hill and Waters for \$13,000. His grand dam is due on her 9th natural calf. His great grand dam produced 10 natural calves. Rangeland U235 ranks in the Top 10-11% of the Angus breed for 200 Growth, 400 Growth and 600 Growth. Top 11-18% for Retail Beef Yield and Carcase Weight.

DOCILITY STAR RATING



Scrotal Circumference: 43cm



Age: 22 months

Purchaser..... \$.....

Lot 4 BLACK ANGUS ROCKSTAR U334[#] Ident: SJQ23U334

Born: 27/5/2023 **Genetic Status:** AMFU,CAFU,DDFU,NHFU **Mating Type:** Natural **Registration Level:** APR
 G A R PROPHET^{SV} EF COMPLEMENT 8088^{PV}
 BALDRIDGE BEAST MODE B074^{PV} BLACK ANGUS COMPLEMENT L51^{SV}
 BALDRIDGE ISABEL Y69[#] BLACK ANGUS EXPO J119[#]

SIRE: SJQR70 BLACK ANGUS BEAST MODE R70^{SV} **DAM:** SJQP205 BLACK ANGUS RACEY P205[#]
 BLACK ANGUS BRAMBUIE F197^{SV} GILMANDYKE JERRAWANGALA J0340^{SV}
 BLACK ANGUS EMPRESS J257[#] BLACK ANGUS RACEY M267[#]
 BLACK ANGUS EMPRESS F171[#] BLACK ANGUS RACEY J179[#]

January 2025 TransTasman Angus Cattle Evaluation																	
TACE	Calving Ease Direct	Calving Ease Daughters	Gestation Length (days)	Birth Weight (kg)	200 Day Weight (kg)	400 Day Weight (kg)	600 Day Weight (kg)	MCW (kg)	Milk (kg)	Scrotal Size (cm)	CWT (kg)	EMA (sq cm)	Rib Fat (mm)	Rump Fat (mm)	RBY %	IMF %	Docility
EBV	-0.9	+3.0	-2.0	+5.6	+62	+109	+146	+137	+17	+3.2	+85	+4.1	-1.4	-2.1	+0.8	+0.5	+28
ACC	54%	46%	63%	72%	68%	67%	73%	65%	58%	72%	58%	56%	58%	58%	52%	60%	60%

Traits Observed: BWT,200WT,600WT,SC,Scan(Rib,Rump,IMF),DOC

Rockstar U334 is definitely one of the standouts in the yard. First of the Black Angus Beast Mode R70 "Rockstar" sons to sell and one of the youngest in the sale. Rockstar sons are rock solid for Foot Structure, Docility and Fertility. U334 ranks in the Top 8-11% of the breed for 200 Growth, 400 Growth and 600 Growth. Top 11% for Carcase Weight. Top 12% for Feed Efficiency. KPI @ 191.

DOCILITY STAR RATING



Scrotal Circumference: 43 cm



Age: 20.5 months

Purchaser..... \$.....

Lot 5 BLACK ANGUS 38 SPECIAL U238[#] Ident: SJQ23U238

Born: 12/4/2023 **Genetic Status:** AMFU,CAFU,DDFU,NHFU **Mating Type:** AI **Registration Level:** HBR
 EF COMPLEMENT 8088^{PV} TE MANIA BERKLEY B1^{PV}
 EF COMMANDO 1366^{PV} TE MANIA EMPEROR E343^{PV}
 RIVERBEND YOUNG LUCY W1470[#] TE MANIA LOWAN Z74^{PV}

SIRE: USA18229487 BALDRIDGE 38 SPECIAL^{PV} **DAM:** CSWL66 MURDEDUKE JEDDA L66[#]
 STYLES UPGRADE J59[#] Dociility Star: 4 TC ABERDEEN 759^{SV}
 BALDRIDGE ISABEL Y69[#] MURDEDUKE JEDDA J219[#]
 BALDRIDGE ISABEL T935[#] MURDEDUKE JEDDA F50^{PV}

January 2025 TransTasman Angus Cattle Evaluation																	
TACE	Calving Ease Direct	Calving Ease Daughters	Gestation Length (days)	Birth Weight (kg)	200 Day Weight (kg)	400 Day Weight (kg)	600 Day Weight (kg)	MCW (kg)	Milk (kg)	Scrotal Size (cm)	CWT (kg)	EMA (sq cm)	Rib Fat (mm)	Rump Fat (mm)	RBY %	IMF %	Docility
EBV	+2.3	+2.4	-2.8	+4.9	+59	+105	+141	+124	+18	+2.0	+76	+5.7	+0.0	-2.3	+0.3	+2.4	+20
ACC	65%	57%	83%	73%	71%	69%	70%	69%	65%	67%	64%	63%	64%	64%	60%	66%	66%

Traits Observed: GL,BWT,200WT,600WT,SC,Scan(EMA,Rib,Rump,IMF)

38 Special progeny do not disappoint. Black Angus 38 Special U238 is no exception. His TeMania Emperor sired dam raised this fellow to be one of the heaviest weaners in 2023. He ranks in the Top 12-16% of the Angus breed for 200 Growth, 400 Growth and 600 Growth. Positive Calving Ease.

DOCILITY STAR RATING



Scrotal Circumference: 42 cm



Age: 22 months

Purchaser..... \$.....



Lot 6 BLACK ANGUS RANGELAND U225^{SV} Ident: SJQ23U225
Born: 8/4/2023 **Genetic Status:** AMFU,CAFU,DDF,NHFU **Mating Type:** AI **Registration Level:** HBR
 BASIN RAINMAKER 2704[#] K C F BENNETT PERFORMER[#]
 BASIN RAINMAKER 4404^{PV} WITHERSWOOD PERFORMER E49^{PV}
 BASIN JOY 1036[#] WITHERSWOOD FLOWER C36^{SV}
SIRE: USA19590500 ELLINGSON RANGELAND^{PV} **DAM: SJQK53 BLACK ANGUS MST K53[#]**
 CTS REMEDY 1T01[#] ARDROSSAN ADMIRAL A2^{PV}
 EA EMBLYNETTE 7009[#] BLACK ANGUS CLEOPATRA D25[#]
 EA EMBLYNETTE 5241[#] BLACK ANGUS CLEOPATRA A1[#]

January 2025 TransTasman Angus Cattle Evaluation																	
TACE	Calving Ease Direct	Calving Ease Daughters	Gestation Length (days)	Birth Weight (kg)	200 Day Weight (kg)	400 Day Weight (kg)	600 Day Weight (kg)	MCW (kg)	Milk (kg)	Scrotal Size (cm)	CWT (kg)	EMA (sq cm)	Rib Fat (mm)	Rump Fat (mm)	RBY %	IMF %	Docility
EBV	+5.6	+7.8	-3.0	+4.4	+53	+89	+108	+85	+15	+2.5	+81	+11.0	-0.1	-2.4	+1.3	+1.6	+30
ACC	66%	54%	84%	82%	83%	81%	82%	78%	74%	79%	71%	70%	71%	71%	62%	74%	76%

Traits Observed: GL,BWT,200WT,600WT,SC,Scan(EMA,Rib,Rump,IMF),DOC,Genomics

Rangeland U225 is from the same dam as the great Black Angus Wattle Street Q127. Wattle Street's first entire male drop averaged a whopping \$24,250 in the 2023 Glatz Black Angus sale. Black Angus Rangeland U225 is a Proper Bull. Plus 5.8 for Calving Ease Direct. Top 9% of the Angus breed for Calving Ease Daughters. Top 9% for Retail Beef Yield. Top 10% for EMA. Docility at Plus 30. Semen marketing rights retained.

DOCILITY ST★R RATING



Scrotal Circumference: 44 cm



182

Age: 22 months

Purchaser..... \$.....

Lot 7 BLACK ANGUS 38 SPECIAL U209[#] Ident: SJQ23U209
Born: 4/4/2023 **Genetic Status:** AMFU,CAFU,DDFU,NHFU **Mating Type:** AI **Registration Level:** HBR
 EF COMPLEMENT 8088^{PV} LAWSONS TANK X1235[#]
 EF COMMANDO 1366^{PV} LAWSONS TANK F1686^{SV}
 RIVERBEND YOUNG LUCY W1470[#] LAWSONS ROCKY W129 A809^{PV}
SIRE: USA18229487 BALDRIDGE 38 SPECIAL^{PV} **DAM: SYAK676 STONEY POINT PRINCESS K676[#]**
 STYLES UPGRADE J59[#] ARDROSSAN CONNECTION X15^{SV}
 BALDRIDGE ISABEL Y69[#] VERMONT PRINCESS E182[#]
 BALDRIDGE ISABEL T935[#] ARDROSSAN PRINCESS U94[#]

January 2025 TransTasman Angus Cattle Evaluation																	
TACE	Calving Ease Direct	Calving Ease Daughters	Gestation Length (days)	Birth Weight (kg)	200 Day Weight (kg)	400 Day Weight (kg)	600 Day Weight (kg)	MCW (kg)	Milk (kg)	Scrotal Size (cm)	CWT (kg)	EMA (sq cm)	Rib Fat (mm)	Rump Fat (mm)	RBY %	IMF %	Docility
EBV	+5.0	+3.5	-5.9	+3.3	+50	+93	+132	+115	+18	+1.7	+71	+6.4	+0.5	-0.8	+0.2	+2.3	+18
ACC	61%	52%	82%	74%	70%	69%	74%	69%	65%	73%	62%	60%	62%	62%	57%	62%	63%

Traits Observed: GL,BWT,200WT,600WT,SC,Scan(EMA,Rib,Rump,IMF)

38 Special U209 is an 'A' grade heifer joining option from a Royal Pedigree. Baldrige 38 Special over a fantastic proven female who can boast Tank and X15 in her lineage. Black Angus 38 Special U209 ranks in the Top 23% of the Angus breed for 600 Growth. Positive Fat.

DOCILITY ST★R RATING



Scrotal Circumference: 42.5cm



165

Age: 22 months

Purchaser..... \$.....

Lot 8 BLACK ANGUS RANGELAND U277^{PV} Ident: SJQ23U277
Born: 17/4/2023 **Genetic Status:** AMFU,CAFU,DDFU,NHFU **Mating Type:** AI **Registration Level:** HBR
 BASIN RAINMAKER 2704[#] BOOROOMOOKA HYPERNO H605^{PV}
 BASIN RAINMAKER 4404^{PV} CLUDEN NEWRY HYPERNO M171^{SV}
 BASIN JOY 1036[#] CLUDEN NEWRY ARAWATEA D40[#]
SIRE: USA19590500 ELLINGSON RANGELAND^{PV} **DAM: THCP272 CLUDEN NEWRY P272^{SV}**
 CTS REMEDY 1T01[#] ARDROSSAN ADMIRAL A2^{PV}
 EA EMBLYNETTE 7009[#] CLUDEN NEWRY ALICE C157[#]
 EA EMBLYNETTE 5241[#] CLUDEN NEWRY ALICE Z142[#]

January 2025 TransTasman Angus Cattle Evaluation																	
TACE	Calving Ease Direct	Calving Ease Daughters	Gestation Length (days)	Birth Weight (kg)	200 Day Weight (kg)	400 Day Weight (kg)	600 Day Weight (kg)	MCW (kg)	Milk (kg)	Scrotal Size (cm)	CWT (kg)	EMA (sq cm)	Rib Fat (mm)	Rump Fat (mm)	RBY %	IMF %	Docility
EBV	+0.1	+4.5	-2.2	+6.2	+64	+112	+147	+128	+21	+2.4	+94	+5.2	+0.4	-1.3	+0.6	+0.4	+17
ACC	60%	48%	83%	74%	75%	73%	73%	71%	66%	75%	64%	64%	65%	65%	58%	68%	68%

Traits Observed: GL,BWT,200WT,SC,Scan(Rib,Rump,IMF),DOC

Black Angus Rangeland U277 is a power sire. He ranks in the Top 6-7% of the Angus breed for 200 Growth, 400 Growth and 600 Growth. Top 3% for Carcase Weight. Positive Fat. The great Ardrossan Admiral A2 in his pedigree sures him up as a cow maker.

DOCILITY ST★R RATING



Scrotal Circumference: 41.5cm



177

Age: 22 months

Purchaser..... \$.....



Lot 9 BLACK ANGUS NATIONWIDE U265# Ident: SJQ23U265

Born: 15/4/2023 **Genetic Status:** AMFU,CAFU,DDFU,NHFU **Mating Type:** AI **Registration Level:** HBR
 G A R INGENUITY# HYLINE RIGHT TIME 338#
 H P C A INTENSITY# K C F BENNETT PERFORMER#
 G A R PREDESTINED 287L# K C F MISS 589 L182#

SIRE: NOR432 RENNYLEA NATIONWIDE N432PV **DAM: SJQM5 BLACK ANGUS WHISTLING BIRD M5#**
 TE MANIA BERKLEY B1PV ARDROSSAN EQUATOR A241PV
 RENNYLEA H367SV BLACK ANGUS WHISTLING BIRD J43#
 RENNYLEA F228# BLACK ANGUS WHISTLING BIRD C103#

January 2025 TransTasman Angus Cattle Evaluation																	
TACE	Calving Ease Direct	Calving Ease Daughters	Gestation Length (days)	Birth Weight (kg)	200 Day Weight (kg)	400 Day Weight (kg)	600 Day Weight (kg)	MCW (kg)	Milk (kg)	Scrotal Size (cm)	CWT (kg)	EMA (sq cm)	Rib Fat (mm)	Rump Fat (mm)	RBY %	IMF %	Docility
EBV	+2.5	+5.4	-6.7	+4.3	+62	+112	+146	+140	+22	+2.5	+90	+4.1	-0.4	-0.5	+0.1	+1.4	+13
ACC	59%	53%	83%	75%	71%	70%	74%	68%	65%	74%	62%	61%	63%	63%	57%	64%	65%

Traits Observed: GL,BWT,200WT,600WT,SC,Scan(EMA,Rib,Rump,IMF),DOC

Black Angus Nationwide U265 is the first Rennylea Nationwide son to sell in SA for Glatz Black Angus. Nationwide was recruited for AI use as a well proven 6yo sire. Nationwide U265 has been a standout within his peers since a calf. His dam is due on her 7th natural calf and produced our sale topper in 2020 selling to Mark and Leah Jacob. Her pedigree is true maternal royalty, combining 338 and A241. He offers a big spread from Low Birth to High Growth and is suitable for heifer joining. He ranks in the Top 7-10% of the Angus breed for 200 growth, 400 Growth and 600 Growth. Top 6% for Carcase Weight. Semen marketing rights retained.

DOCILITY ST*AR RATING



KPI
173

Scrotal Circumference: 44cm

Age: 22 months

Purchaser..... \$.....

Lot 10 BLACK ANGUS HARRY TAYLOR U269# Ident: SJQ23U269

Born: 16/4/2023 **Genetic Status:** AMFU,CAFU,DDFU,NHFU **Mating Type:** AI **Registration Level:** HBR
 KM BROKEN BOW 002PV TE MANIA BERKLEY B1PV
 VARILEK GEDDES 7068PV JAROBEE F19SV
 VARILEK GOLDIE 5051 506# JAROBEE NEUTRON B133#

SIRE: SJQR605 BLACK ANGUS GEDDES R605PV **DAM: SJQK269 BLACK ANGUS EMPRESS K269#**
 LAWSONS INCREDIBLE H803PV BLACK ANGUS NEWSLINE B37SV
 LAWSONS INCREDIBLE L882F BLACK ANGUS W71 EMPRESS F193#
 LAWSONS REGENT J1425SV BEARTOOTH EMPRESS W71#

January 2025 Mid-Parent EBV's																	
TACE	Calving Ease Direct	Calving Ease Daughters	Gestation Length (days)	Birth Weight (kg)	200 Day Weight (kg)	400 Day Weight (kg)	600 Day Weight (kg)	MCW (kg)	Milk (kg)	Scrotal Size (cm)	CWT (kg)	EMA (sq cm)	Rib Fat (mm)	Rump Fat (mm)	RBY %	IMF %	Docility
EBV	-3.0	+3.6	-3.8	+6.1	+58	+99	+122	+107	+16	+1.7	+78	+9.3	-2.1	-3.8	+2.0	-0.4	23
ACC	71%	55%	45%	88%	87%	87%	87%	83%	81%	85%	77%	76%	76%	75%	70%	77%	81%

Traits Observed: None

Harry Taylor U269's dam is due on her 8th natural calf and has earned legend status at Glatz Black Angus. Her sons have sold for \$16,000 in 2021. \$26,000 in 2022. \$14,000 in 2023 and \$8,000 in 2024. Ben considered her mating to BA Geddes R605 to be the best combination so far.

DOCILITY ST*AR RATING



KPI
134

Scrotal Circumference: 41cm

Age: 22 months

Purchaser..... \$.....

Lot 11 BLACK ANGUS RANGELAND U214PV Ident: SJQ23U214

Born: 5/4/2023 **Genetic Status:** AMFU,CAFU,DDF,NHFU **Mating Type:** AI **Registration Level:** HBR
 BASIN RAINMAKER 2704# MATAURI REALITY 839#
 BASIN RAINMAKER 4404PV CLUNIE RANGE LEGEND L348PV
 BASIN JOY 1036# ABERDEEN ESTATE LAURA J81PV

SIRE: USA19590500 ELLINGSON RANGELANDPV **DAM: THCP103 CLUDEN NEWRY P103SV**
 CTS REMEDY 1T01# K C F BENNETT TOTAL#
 EA EMBLYNETTE 7009# CLUDEN NEWRY FLOWER H13#
 EA EMBLYNETTE 5241# CLUDEN NEWRY FLOWER F44#

January 2025 TransTasman Angus Cattle Evaluation																	
TACE	Calving Ease Direct	Calving Ease Daughters	Gestation Length (days)	Birth Weight (kg)	200 Day Weight (kg)	400 Day Weight (kg)	600 Day Weight (kg)	MCW (kg)	Milk (kg)	Scrotal Size (cm)	CWT (kg)	EMA (sq cm)	Rib Fat (mm)	Rump Fat (mm)	RBY %	IMF %	Docility
EBV	+3.6	+7.1	-7.9	+3.2	+53	+92	+110	+98	+17	+1.8	+62	+7.6	+1.8	-1.4	+0.7	+1.7	+15
ACC	62%	51%	84%	76%	75%	74%	76%	72%	67%	76%	66%	65%	66%	66%	59%	69%	69%

Traits Observed: GL,BWT,200WT,600WT,SC,Scan(EMA,Rib,Rump,IMF)

So much to like about Rangeland U214. An elite heifer joining prospect whose dam produced Lot 11 in 2024 selling for \$12,000 to a very good judge in James McKay of Egremont. U214 ranks in the Top 14% of the Angus breed for Positive Fat. EMA @ 7.7

DOCILITY ST*AR RATING



KPI
157

Scrotal Circumference: 41.5cm

Age: 22 months

Purchaser..... \$.....



Lot 12 BLACK ANGUS RANGELAND U226^{SV} Ident: SJQ23U226
Born: 8/4/2023 **Genetic Status:** AMFU,CAFU,DDFU,NHFU **Mating Type:** AI **Registration Level:** HBR
 BASIN RAINMAKER 2704# MATAURI REALITY 839#
 BASIN RAINMAKER 4404^{PV} CLUNIE RANGE LEGEND L348^{PV}
 BASIN JOY 1036# ABERDEEN ESTATE LAURA J81^{PV}
SIRE: USA19590500 ELLINGSON RANGELAND^{PV} DAM: THCP65 CLUDEN NEWRY P65[#]
 CTS REMEDY 1T01# ARDROSSAN ADMIRAL A2^{PV}
 EA EMBLYNETTE 7009# CLUDEN NEWRY EGYPT D134#
 EA EMBLYNETTE 5241# CLUDEN NEWRY EGYPT W005#

January 2025 TransTasman Angus Cattle Evaluation																	
TACE	Calving Ease Direct	Calving Ease Daughters	Gestation Length (days)	Birth Weight (kg)	200 Day Weight (kg)	400 Day Weight (kg)	600 Day Weight (kg)	MCW (kg)	Milk (kg)	Scrotal Size (cm)	CWT (kg)	EMA (sq cm)	Rib Fat (mm)	Rump Fat (mm)	RBY %	IMF %	Docility
EBV	+1.8	+3.3	-6.2	+5.8	+59	+101	+126	+125	+13	+2.2	+76	+5.6	-0.8	-3.8	+0.9	+1.5	+22
ACC	58%	47%	83%	74%	71%	70%	75%	69%	61%	75%	62%	61%	62%	61%	56%	64%	64%

Traits Observed: GL,BWT,200WT,600WT,SC,Scan(EMA,Rib,Rump,IMF),DOC

5 Star Docility. 3/4 brother to the previous lot - what a perfect pair! Black Angus Rangeland U226 boasts an impeccable pedigree, ideal for the most discerning self replacing beef breeders - Rangeland / Reality / Admiral A2. He ranks in the Top 18-28% of the Angus breed for 200 Growth, 400 Growth and 600 Growth. Top 18-28% for Carcase Weight and Retail Beef Yield. Semen marketing rights retained.

DOCILITY ST★R RATING



Scrotal Circumference: 41.5cm



163

Age: 22 months

Purchaser..... \$.....

Lot 13 BLACK ANGUS NATIONWIDE U255[#] Ident: SJQ23U255
Born: 14/4/2023 **Genetic Status:** AMFU,CAFU,DD2%,NHFU **Mating Type:** AI **Registration Level:** HBR
 G A R INGENUITY# DUNOON GABBA G548^{PV}
 H P C A INTENSITY# STONEY POINT LANCELOT L07^{SV}
 G A R PREDESTINED 287L# STONEY POINT UNDULY G233#
SIRE: NOR432 RENNYLEA NATIONWIDE N432^{PV} DAM: SJQQ6 BLACK ANGUS JANE Q6[#]
 TE MANIA BERKLEY B1^{PV} BLACK ANGUS EQUATOR A241 H11^{SV}
 RENNYLEA H367^{SV} BLACK ANGUS JANE N163#
 RENNYLEA F228# BLACK ANGUS JANE K91#

January 2025 TransTasman Angus Cattle Evaluation																	
TACE	Calving Ease Direct	Calving Ease Daughters	Gestation Length (days)	Birth Weight (kg)	200 Day Weight (kg)	400 Day Weight (kg)	600 Day Weight (kg)	MCW (kg)	Milk (kg)	Scrotal Size (cm)	CWT (kg)	EMA (sq cm)	Rib Fat (mm)	Rump Fat (mm)	RBY %	IMF %	Docility
EBV	+2.5	+3.7	-5.6	+4.3	+64	+110	+145	+130	+21	+2.4	+94	+5.9	+0.0	-0.2	-0.4	+3.5	+20
ACC	56%	49%	83%	74%	70%	69%	74%	67%	62%	73%	60%	59%	61%	61%	56%	62%	63%

Traits Observed: GL,BWT,200WT,600WT,SC,Scan(Rib,Rump,IMF)

Nationwide U255's young dam produced Lot 8 in 2023 selling to Nicolai Farms for \$24,000. U255 is the #5 ranked KPI bull in the sale. He is positioned within the Top 6-9% of the Angus breed for 200 Growth, 400 Growth and 600 Growth. Top 4% for Carcase Weight. Top 7% for ABL. A proper bull with IMF @ 3.5 and Positive Calving Ease adds to the story.

DOCILITY ST★R RATING



Scrotal Circumference: 43cm



192

Age: 22 months

Purchaser..... \$.....

Lot 14 BLACK ANGUS NATIONWIDE U223[#] Ident: SJQ23U223
Born: 8/4/2023 **Genetic Status:** AMFU,CAFU,DDFU,NHFU **Mating Type:** AI **Registration Level:** HBR
 G A R INGENUITY# B/R NEW DAY 454#
 H P C A INTENSITY# V A R RESERVE 1111^{PV}
 G A R PREDESTINED 287L# SANDPOINT BLACKBIRD 8809#
SIRE: NOR432 RENNYLEA NATIONWIDE N432^{PV} DAM: SYAM272 STONEY POINT ELLA M272[#]
 TE MANIA BERKLEY B1^{PV} COONAMBLE ELEVATOR E11^{PV}
 RENNYLEA H367^{SV} STONEY POINT ELLA K535^{SV}
 RENNYLEA F228# RENNYLEA F214#

January 2025 TransTasman Angus Cattle Evaluation																	
TACE	Calving Ease Direct	Calving Ease Daughters	Gestation Length (days)	Birth Weight (kg)	200 Day Weight (kg)	400 Day Weight (kg)	600 Day Weight (kg)	MCW (kg)	Milk (kg)	Scrotal Size (cm)	CWT (kg)	EMA (sq cm)	Rib Fat (mm)	Rump Fat (mm)	RBY %	IMF %	Docility
EBV	+4.2	+3.4	-5.8	+4.1	+55	+97	+124	+130	+17	+0.4	+77	+5.3	-0.4	-1.0	+0.2	+1.6	+25
ACC	59%	52%	82%	74%	71%	70%	74%	68%	64%	74%	62%	61%	63%	63%	57%	64%	65%

Traits Observed: GL,BWT,200WT,600WT,SC,Scan(EMA,Rib,Rump,IMF),DOC

Nationwide U223 is a heifer joining prospect that is balanced across all measured parameters. He is the first son from his broody dam who blends 2 great cow-making sires in her pedigree - Reserve and Elevator.

DOCILITY ST★R RATING



Scrotal Circumference: 39.5cm



158

Age: 22 months

Purchaser..... \$.....



Lot 15 BLACK ANGUS MOE U306# Ident: SJQ23U306

Born: 1/5/2023 **Genetic Status:** AMFU,CAFU,DDFU,NHFU **Mating Type:** AI **Registration Level:** HBR

TE MANIA CALAMUS C46^{SV} MILWILLAH ELEVATOR H76^{PV}
TE MANIA FOE F734^{SV} PINORA LEVI L73[#]
TE MANIA DANDLOO D700[#] PINORA LILA G68[#]

SIRE: GTNM6 CHILTERN PARK MOE M6^{PV} DAM: SJQP315 BLACK ANGUS ENTERPRISE P315[#]

HIDDEN VALLEY TIMEOUT A45^{SV} BLACK ANGUS BRAMBUIE F197^{SV}
STRATHEWEN TIMEOUT JADE F15^{PV} BLACK ANGUS ENTERPRISE J279[#]
STRATHEWEN 1407 JADE C05^{PV} BLACK ANGUS U21 ENTERPRISE F17[#]

January 2025 TransTasman Angus Cattle Evaluation																	
TACE	Calving Ease Direct	Calving Ease Daughters	Gestation Length (days)	Birth Weight (kg)	200 Day Weight (kg)	400 Day Weight (kg)	600 Day Weight (kg)	MCW (kg)	Milk (kg)	Scrotal Size (cm)	CWT (kg)	EMA (sq cm)	Rib Fat (mm)	Rump Fat (mm)	RBY %	IMF %	Docility
EBV	-7.3	-2.0	+1.5	+7.9	+62	+110	+152	+131	+18	+1.9	+91	+5.5	-1.3	-0.5	+0.3	+1.6	+33
ACC	61%	53%	82%	74%	70%	69%	74%	68%	63%	73%	63%	61%	63%	63%	58%	64%	64%

Traits Observed: GL,BWT,200WT,600WT,SC,Scan(EMA,Rib,Rump,IMF)

Attention weaner producers. Moe U306 is the man to get you at the start of the lane in the weaner sales. We are still paid for weight. U306 ranks in the Top 5-10% of the Angus breed for 200 Growth, 400 Growth and 600 Growth. Top 11% for Docility. Moe progeny are rock solid on Feet and Docility.

DOCILITY ST*AR RATING
★★★★★
Scrotal Circumference: 41cm **Age:** 21.5 months

KPI
170

Purchaser: \$.....

Lot 16 BLACK ANGUS 38 SPECIAL U213# Ident: SJQ23U213

Born: 4/4/2023 **Genetic Status:** AMFU,CAFU,DDFU,NHFU **Mating Type:** AI **Registration Level:** HBR

EF COMPLEMENT 8088^{PV} MATAURI REALITY 839[#]
EF COMMANDO 1366^{PV} KAROO KNOCKOUT K176^{SV}
RIVERBEND YOUNG LUCY W1470[#] KAROO JEDDA H213[#]

SIRE: USA18229487 BALDRIDGE 38 SPECIAL^{PV} DAM: SJQP1 BLACK ANGUS WAMALTA P1^{SV}

STYLES UPGRADE J59[#] K C F BENNETT PERFORMER[#]
BALDRIDGE ISABEL Y69[#] BLACK ANGUS WAMALTA M109[#]
BALDRIDGE ISABEL T935[#] BLACK ANGUS WAMALTA F107[#]

January 2025 TransTasman Angus Cattle Evaluation																	
TACE	Calving Ease Direct	Calving Ease Daughters	Gestation Length (days)	Birth Weight (kg)	200 Day Weight (kg)	400 Day Weight (kg)	600 Day Weight (kg)	MCW (kg)	Milk (kg)	Scrotal Size (cm)	CWT (kg)	EMA (sq cm)	Rib Fat (mm)	Rump Fat (mm)	RBY %	IMF %	Docility
EBV	+5.8	+6.2	-7.0	+2.8	+52	+97	+125	+110	+17	+2.2	+65	+7.4	+1.2	+0.0	+0.5	+2.1	+19
ACC	64%	56%	83%	75%	71%	70%	75%	69%	65%	75%	64%	62%	64%	64%	59%	65%	66%

Traits Observed: GL,BWT,200WT,600WT,SC,Scan(EMA,Rib,Rump,IMF),DOC

38 Special U213 is an elite option for heifers or cows. He ranks in the Top 15-24% of the Angus breed for Calving Ease Direct, Calving Ease Daughters, Short Gestation Length and Low Birth Weight. Top 24% for Positive Fat. High KPI.

DOCILITY ST*AR RATING
★★★★☆
Scrotal Circumference: 39cm **Age:** 22.5 months

KPI
189

Purchaser: \$.....

Lot 17 BLACK ANGUS 38 SPECIAL U278# Ident: SJQ23U278

Born: 18/4/2023 **Genetic Status:** AMFU,CAFU,DDFU,NHFU **Mating Type:** AI **Registration Level:** HBR

EF COMPLEMENT 8088^{PV} COONAMBLE Z3^{PV}
EF COMMANDO 1366^{PV} COONAMBLE ELEVATOR E11^{PV}
RIVERBEND YOUNG LUCY W1470[#] BANGADANG B31^{SV}

SIRE: USA18229487 BALDRIDGE 38 SPECIAL^{PV} DAM: SJQM117 BLACK ANGUS ROSEBUD M117[#]

STYLES UPGRADE J59[#] MORDALLUP NET WORTH C170^{SV}
BALDRIDGE ISABEL Y69[#] BLACK ANGUS ROSEBUD F25[#]
BALDRIDGE ISABEL T935[#] ROSSANDER ROSEBUD A306[#]

January 2025 TransTasman Angus Cattle Evaluation																	
TACE	Calving Ease Direct	Calving Ease Daughters	Gestation Length (days)	Birth Weight (kg)	200 Day Weight (kg)	400 Day Weight (kg)	600 Day Weight (kg)	MCW (kg)	Milk (kg)	Scrotal Size (cm)	CWT (kg)	EMA (sq cm)	Rib Fat (mm)	Rump Fat (mm)	RBY %	IMF %	Docility
EBV	+3.1	+3.0	-2.6	+4.1	+58	+104	+134	+124	+16	+1.5	+76	+8.2	-0.7	-1.4	+1.0	+0.6	+24
ACC	64%	56%	83%	75%	72%	70%	75%	69%	66%	75%	64%	63%	64%	64%	59%	65%	66%

Traits Observed: GL,BWT,200WT,600WT,SC,Scan(EMA,Rib,Rump,IMF)

Yet another ripping 38 Special son suitable for heifers or cows. 38 Special U278's dam can boast two of WA's leading cow herds - Coonamble and Mordallup. U278 ranks within the Top 18-20% of the Angus breed for 200 Growth, 400 Growth, 600 Growth and Retail Beef Yield. Top 24-29% for EMA, Carcase Weight, Retail Beef Yield and Feed Efficiency.

DOCILITY ST*AR RATING
★★★★☆
Scrotal Circumference: 42cm **Age:** 22 months

KPI
187

Purchaser: \$.....



GLATZ BLACK ANGUS



SOUTH AUSTRALIA

→ **SA BEEF WEEK**
TUESDAY 11TH FEB 2025
ON PROPERTY - AVENUE

→ **BULL SALE**
WEDNESDAY 19TH FEB 2025, 11AM
ON PROPERTY - AVENUE
2135 AVENUE RANGE RD,
AVENUE RANGE SA



VICTORIA

→ **VIC BEEF WEEK**
WEDNESDAY 29TH JAN 2025
ON PROPERTY - COROONA

→ **BULL SALE**
MONDAY 24TH FEB 2025, 11AM
ON PROPERTY - COROONA
299 CAROONA LANE,
BRANXHOLME VIC

CONTACT BEN & SAMANTHA GLATZ

Mobile: 0407 712 455 Email: glatzblackangus@gmail.com

glatzblackangus.com 



Lot 18 BLACK ANGUS RANGELAND U279# Ident: SJQ23U279

Born: 18/4/2023 **Genetic Status:** AMFU,CAFU,DDFU,NHFU **Mating Type:** AI **Registration Level:** APR
 BASIN RAINMAKER 2704# COONAMBLE Z3^{PV}
 BASIN RAINMAKER 4404^{FV} COONAMBLE ELEVATOR E11^{FV}
 BASIN JOY 1036# BANGADANG B31^{SV}

SIRE: USA19590500 ELLINGSON RANGELAND^{PV} **DAM: SJQL177 BLACK ANGUS ENTERPRISE L177#**
 CTS REMEDY 1T01# BT RIGHT TIME 24J#
 EA EMBLYNETTE 7009# BLACK ANGUS 24J ENTERPRISE F43#
 EA EMBLYNETTE 5241# MIEGUNYAH S050#

January 2025 TransTasman Angus Cattle Evaluation																	
TACE	Calving Ease Direct	Calving Ease Daughters	Gestation Length (days)	Birth Weight (kg)	200 Day Weight (kg)	400 Day Weight (kg)	600 Day Weight (kg)	MCW (kg)	Milk (kg)	Scrotal Size (cm)	CWT (kg)	EMA (sq cm)	Rib Fat (mm)	Rump Fat (mm)	RBY %	IMF %	Docility
EBV	-1.9	+0.6	-3.0	+7.0	+68	+115	+152	+147	+17	+1.8	+93	+7.9	-0.9	-1.3	+1.2	-0.4	+34
ACC	58%	47%	84%	75%	72%	71%	75%	69%	63%	75%	63%	61%	62%	61%	57%	63%	64%

Traits Observed: GL,BWT,200WT,600WT,SC,Scan(EMA,Rib,Rump,IMF)

How interesting that this bull and the previous lot were birth weighed and recorded consecutively - now consecutive lots in the sale. Rangeland U279's dam is due on her 8th natural calf this year. She produced the top price in 2019 selling to Goolagong. This fellow is an elite performance sire. He ranks in the Top 3-4% of the Angus breed for 200 Growth, 400 Growth, 600 Growth and Carcase Weight. Top 10% for Docility. Top 12% for Feed Efficiency. EMA @ 8.1

DOCILITY ST★R RATING
 ★ ★ ★ ★ ★
Scrotal Circumference: 42.5cm
Age: 22 months

KPI
194

Purchaser..... \$.....

Lot 19 BLACK ANGUS MAKAHU U326# Ident: SJQ23U326

Born: 14/5/2023 **Genetic Status:** AMFU,CAFU,DDFU,NHFU **Mating Type:** Natural **Registration Level:** HBR
 SCHURRTOP REALITY X723# G A R RETAIL PRODUCT#
 MATAURI REALITY 839# CONNEALY MENTOR 7374^{SV}
 MATAURI 06663# EXECUTA OF CONANGA 939#

SIRE: QLLM602 GLENOCH-JK MAKAHU M602^{SV} **DAM: SJQL211 BLACK ANGUS JENNIFER L211#**
 GLENOCH HINMAN H221^{SV} BANQUET ZACATON Z155^{SV}
 GLENOCH-JK ANN K615^{SV} BLACK ANGUS JENNIFER B65^{PV}
 GLENOCH-JK ANN F606^{SV} BLACK ANGUS BUGSY W14#

January 2025 TransTasman Angus Cattle Evaluation																	
TACE	Calving Ease Direct	Calving Ease Daughters	Gestation Length (days)	Birth Weight (kg)	200 Day Weight (kg)	400 Day Weight (kg)	600 Day Weight (kg)	MCW (kg)	Milk (kg)	Scrotal Size (cm)	CWT (kg)	EMA (sq cm)	Rib Fat (mm)	Rump Fat (mm)	RBY %	IMF %	Docility
EBV	+2.0	-2.1	-2.0	+5.2	+50	+90	+118	+110	+21	+3.3	+69	+6.6	+0.3	-1.1	+0.5	+1.8	+14
ACC	62%	55%	69%	75%	72%	71%	76%	70%	67%	75%	64%	62%	64%	64%	59%	64%	66%

Traits Observed: BWT,200WT,600WT,SC,Scan(EMA,Rib,Rump,IMF),DOC

The first Makahu to sell in this sale. Makahu U326's dam produced an \$18,000 son in 2023, selling to New Generation Angus Stud WA. Makahu U326 ranks in the Top 15% of the breed for Scrotal Size. Top 22% for Milk. Positive Calving Ease. Positive Fat. An ideal sire to breed lovely replacement females.

DOCILITY ST★R RATING
 ★ ★ ★ ★ ★
Scrotal Circumference: 42cm
Age: 21 months

KPI
140

Purchaser..... \$.....

Lot 20 BLACK ANGUS MAKAHU U362^{SV} Ident: SJQ23U362

Born: 14/4/2023 **Genetic Status:** AMFU,CAFU,DDFU,NHFU **Mating Type:** AI **Registration Level:** APR
 SCHURRTOP REALITY X723# EF COMPLEMENT 8088^{PV}
 MATAURI REALITY 839# BLACK ANGUS COMPLEMENT L51^{SV}
 MATAURI 06663# BLACK ANGUS EXPO J119#

SIRE: QLLM602 GLENOCH-JK MAKAHU M602^{SV} **DAM: SJQP301 BLACK ANGUS CHAMPAGNE P301#**
 GLENOCH HINMAN H221^{SV} BLACK ANGUS EQUATOR A241 H11^{SV}
 GLENOCH-JK ANN K615^{SV} BLACK ANGUS CHAMPAGNE L27#
 GLENOCH-JK ANN F606^{SV} BLACK ANGUS CHAMPAGNE J247^{SV}

January 2025 TransTasman Angus Cattle Evaluation																	
TACE	Calving Ease Direct	Calving Ease Daughters	Gestation Length (days)	Birth Weight (kg)	200 Day Weight (kg)	400 Day Weight (kg)	600 Day Weight (kg)	MCW (kg)	Milk (kg)	Scrotal Size (cm)	CWT (kg)	EMA (sq cm)	Rib Fat (mm)	Rump Fat (mm)	RBY %	IMF %	Docility
EBV	+4.0	+3.2	-5.1	+2.8	+51	+89	+115	+107	+22	+3.7	+70	+4.1	+0.9	+0.0	+0.0	+1.8	+25
ACC	62%	54%	82%	73%	70%	69%	70%	68%	64%	66%	62%	61%	63%	63%	58%	65%	66%

Traits Observed: GL,BWT,200WT,600WT,Scan(EMA,Rib,Rump,IMF),DOC

Makahu U362 is an elite heifer joining option. He can boast a royal maternal pedigree combining a double cross of the great Ardrossan Equator A241. He ranks in the Top 9% of the Angus breed for Scrotal Size. Top 15-25% for Low Birth Weight, Milk and Days to Calving. Positive Fat.

DOCILITY ST★R RATING
 ★ ★ ★ ★ ★
Scrotal Circumference: 44cm
Age: 22 months

KPI
161

Purchaser..... \$.....



Lot 21 BLACK ANGUS 38 SPECIAL U275# Ident: SJQ23U275

Born: 17/4/2023 **Genetic Status:** AMFU,CAFU,DDFU,NHFU **Mating Type:** AI **Registration Level:** HBR
 EF COMPLEMENT 8088^{PV} RENNYLEA EDMUND E11^{PV}
 EF COMMANDO 1366^{PV} WILLOW FIELDS HANS H37^{PV}
 RIVERBEND YOUNG LUCY W1470[#] WILLOW FIELDS BARA F13^{PV}
SIRE: USA18229487 BALDRIDGE 38 SPECIAL^{PV} **DAM: SJQP291 BLACK ANGUS ADELAIDE P291[#]**
 STYLES UPGRADE J59[#] GILMANDYKE JERRAWANGALA J0340^{SV}
 BALDRIDGE ISABEL Y69[#] BLACK ANGUS ADELAIDE M287[#]
 BALDRIDGE ISABEL T935[#] BLACK ANGUS ADELAIDE H27[#]

January 2025 TransTasman Angus Cattle Evaluation																	
TACE	Calving Ease Direct	Calving Ease Daughters	Gestation Length (days)	Birth Weight (kg)	200 Day Weight (kg)	400 Day Weight (kg)	600 Day Weight (kg)	MCW (kg)	Milk (kg)	Scrotal Size (cm)	CWT (kg)	EMA (sq cm)	Rib Fat (mm)	Rump Fat (mm)	RBY %	IMF %	Dolcility
EBV	+8.6	+5.1	-3.0	+0.9	+50	+90	+115	+88	+20	+3.6	+63	+2.1	+1.2	+0.0	-0.4	+3.1	+19
ACC	62%	54%	82%	74%	71%	70%	75%	69%	64%	74%	63%	61%	63%	62%	57%	64%	65%

Traits Observed: GL,BWT,200WT,600WT,SC,Scan(EMA,Rib,Rump,IMF),DOC

38 Special U275 could be the highest credentialled Heifer Mating Sire in this years draft. Top 6% of the Angus breed for Calving Ease Direct. Top 5% for Low Birth Weight. You will also like his daughters for high Fertility and Milk. Positive Fat.

DOCILITY ST*AR RATING
 ★ ★ ★ ★
KPI
172
 Scrotal Circumference: 46cm Age: 22 months

Purchaser..... \$.....

Lot 22 BLACK ANGUS NATIONWIDE U298# Ident: SJQ23U298

Born: 22/4/2023 **Genetic Status:** AMFU,CAFU,DDFU,NHFU **Mating Type:** AI **Registration Level:** APR
 G A R INGENUITY[#] ARDROSSAN EQUATOR A241^{PV}
 H P C A INTENSITY[#] BLACK ANGUS EQUATOR A241 H11^{SV}
 G A R PREDESTINED 287L[#] BLACK ANGUS X56 WILCOOLA D101^{SV}
SIRE: NOR432 RENNYLEA NATIONWIDE N432^{PV} **DAM: SJQL59 BLACK ANGUS ENTERPRISE L59[#]**
 TE MANIA BERKLEY B1^{PV} BLACK ANGUS BRAMBUIE F197^{SV}
 RENNYLEA H367^{SV} BLACK ANGUS ENTERPRISE J203[#]
 RENNYLEA F228[#] BLACK ANGUS ENTERPRISE G167[#]

January 2025 TransTasman Angus Cattle Evaluation																	
TACE	Calving Ease Direct	Calving Ease Daughters	Gestation Length (days)	Birth Weight (kg)	200 Day Weight (kg)	400 Day Weight (kg)	600 Day Weight (kg)	MCW (kg)	Milk (kg)	Scrotal Size (cm)	CWT (kg)	EMA (sq cm)	Rib Fat (mm)	Rump Fat (mm)	RBY %	IMF %	Dolcility
EBV	-1.9	+4.3	-1.6	+4.6	+60	+102	+125	+117	+17	+1.7	+80	+6.1	-0.5	-0.3	+0.6	+0.9	+25
ACC	58%	50%	83%	75%	71%	70%	75%	68%	64%	74%	61%	60%	62%	62%	56%	63%	64%

Traits Observed: GL,BWT,200WT,600WT,SC,Scan(EMA,Rib,Rump,IMF)

Nationwide U298 has a pedigree full of sensational cows - L59, J203 and G167. He ranks in the Top 14-37% of the Angus breed for 200 Growth, 400 growth and 600 Growth. Top 18% for Feed Efficiency. Top 19% for Carcase Weight. Top 33% for Dolcility.

DOCILITY ST*AR RATING
 ★ ★ ★ ★
KPI
159
 Scrotal Circumference: 42cm Age: 22 months

Purchaser..... \$.....

Lot 23 BLACK ANGUS BLOCKBUSTER U2990# Ident: SJQ23U2990

Born: 15/4/2023 **Genetic Status:** AMFU,CAFU,DDFU,NHFU **Mating Type:** AI **Registration Level:** HBR
 MATAURI REALITY 839[#] TE MANIA BERKLEY B1^{PV}
 MILWILLAH REALITY K12^{PV} JAROBEE F119^{SV}
 MILWILLAH BARUNAH H8^{SV} JAROBEE NEUTRON B133[#]
SIRE: NENM367 KAROO MAIN EVENT M367^{SV} **DAM: SJQL53 BLACK ANGUS EXPO L53[#]**
 ARDROSSAN EQUATOR A241^{PV} LEMMON NEWSLINE C804[#]
 KAROO DORIS G34[#] BLACK ANGUS C804 EXPO A45[#]
 KAROO DORIS Y137^{SV} MIEGUNYAH V027[#]

January 2025 TransTasman Angus Cattle Evaluation																	
TACE	Calving Ease Direct	Calving Ease Daughters	Gestation Length (days)	Birth Weight (kg)	200 Day Weight (kg)	400 Day Weight (kg)	600 Day Weight (kg)	MCW (kg)	Milk (kg)	Scrotal Size (cm)	CWT (kg)	EMA (sq cm)	Rib Fat (mm)	Rump Fat (mm)	RBY %	IMF %	Dolcility
EBV	+0.7	+3.5	-7.0	+4.9	+47	+91	+118	+111	+16	+1.8	+64	+3.0	+0.4	+0.9	+0.4	+1.3	+17
ACC	58%	48%	83%	74%	70%	69%	69%	66%	63%	66%	61%	59%	61%	61%	56%	62%	64%

Traits Observed: GL,BWT,200WT

Blockbuster U2990's sire, Karoo Main Event is a proven to be breed elite for Foot Structure, Positive Fat and Calving Ease - a genuine cow maker. Blockbuster U2990 ranks in the Top 15% of the Angus breed for Short Gestation Length. Top 28% for Positive Rump Fat. Top 37% for Positive Rib Fat.

DOCILITY ST*AR RATING
 ★ ★ ★ ★ ★
KPI
118
 Scrotal Circumference: 41cm Age: 22 months

Purchaser..... \$.....



Lot 24 BLACK ANGUS BLOCKBUSTER U286# Ident: **SJQ23U286**
Born: 19/4/2023 **Genetic Status:** AMFU,CAFU,DDFU,NHFU **Mating Type:** AI **Registration Level:** HBR
 MATAURI REALITY 839# WATTLETOP SITZ 458N E111^{SV}
 MILWILLAH REALITY K12^{PV} BOORAGUL WT458N K11^{SV}
 MILWILLAH BARUNAH H8^{SV} BOORAGUL GLAZE G140#
SIRE: NENM367 KAROO MAIN EVENT M367^{SV} **DAM: SJQN205 BLACK ANGUS WHISTLING BIRD N205#**
 ARDROSSAN EQUATOR A241^{PV} BLACK ANGUS UNLIMITED D11^{SV}
 KAROO DORIS G34# BLACK ANGUS WHISTLING BIRD G49#
 KAROO DORIS Y137^{SV} BLACK ANGUS WHISTLING BIRD E41#

January 2025 TransTasman Angus Cattle Evaluation																	
TACE	Calving Ease Direct	Calving Ease Daughters	Gestation Length (days)	Bith Weight (kg)	200 Day Weight (kg)	400 Day Weight (kg)	600 Day Weight (kg)	MCW (kg)	Milk (kg)	Scrotal Size (cm)	CWT (kg)	EMA (sq cm)	Rib Fat (mm)	Rump Fat (mm)	RBY %	IMF %	Docility
EBV	+0.4	+2.2	-5.2	+4.2	+51	+97	+123	+110	+13	+2.6	+69	+2.6	+0.6	+2.2	-0.6	+3.2	+21
ACC	57%	47%	83%	74%	71%	70%	75%	68%	62%	74%	61%	58%	61%	60%	55%	61%	63%

Traits Observed: GL,BWT,200WT,600WT,SC,Scan(EMA,Rib,Rump,IMF),DOC

DOCILITY ST★R RATING



Scrotal Circumference: 43cm



152

Age: 22 months

Another son of Karoo Main Event who is bred elite for Foot Structure, Positive Fat and Calving Ease. Blockbuster U286 ranks in the Top 14% of the Angus breed for Positive Fat. Top 28% for IMF.

Purchaser..... \$.....

Lot 25 BLACK ANGUS NATIONWIDE U254# Ident: **SJQ23U254**
Born: 14/4/2023 **Genetic Status:** AMFU,CAFU,DDFU,NHFU **Mating Type:** AI **Registration Level:** HBR
 G A R INGENUITY# ARDROSSAN EQUATOR A241^{PV}
 H P C A INTENSITY# BLACK ANGUS EQUATOR A241 H11^{SV}
 G A R PREDESTINED 287L# BLACK ANGUS X56 WILCOOLA D101^{SV}
SIRE: NOR432 RENNYLEA NATIONWIDE N432^{PV} **DAM: SJQL15 BLACK ANGUS BUGSY L15#**
 TE MANIA BERKLEY B1^{PV} BLACK ANGUS NEWSLINE B37^{SV}
 RENNYLEA H367^{SV} BLACK ANGUS BUGSY E113#
 RENNYLEA F228# BLACK BUGSY U10#

January 2025 TransTasman Angus Cattle Evaluation																	
TACE	Calving Ease Direct	Calving Ease Daughters	Gestation Length (days)	Bith Weight (kg)	200 Day Weight (kg)	400 Day Weight (kg)	600 Day Weight (kg)	MCW (kg)	Milk (kg)	Scrotal Size (cm)	CWT (kg)	EMA (sq cm)	Rib Fat (mm)	Rump Fat (mm)	RBY %	IMF %	Docility
EBV	+1.3	+6.2	-5.6	+4.2	+58	+100	+130	+127	+14	+2.1	+81	+3.4	-2.7	-3.4	+0.4	+1.7	+26
ACC	57%	50%	83%	74%	70%	69%	74%	67%	64%	72%	61%	60%	62%	62%	57%	63%	64%

Traits Observed: GL,BWT,200WT,600WT,SC,Scan(EMA,Rib,Rump,IMF)

DOCILITY ST★R RATING



Scrotal Circumference: 42cm



155

Age: 22 months

5 Star Docility Rating. Nationwide U254 ranks in the Top 17-29% of the Angus breed for 200 Growth, 400 Growth, 600 Growth, Docility, Carcase Weight and Feed Efficiency.

Purchaser..... \$.....

Lot 26 BLACK ANGUS JONAH LOMU U342# Ident: **SJQ23U342**
Born: 10/6/2023 **Genetic Status:** AMFU,CAFU,DDFU,NHFU **Mating Type:** Natural **Registration Level:** HBR
 TE MANIA EMPEROR E343^{PV} MILLAH MURRAH EQUATOR D78^{PV}
 STORTH OAKS JACK J7^{SV} KENNY'S CREEK EQUATOR J222^{SV}
 STORTH OAKS G183# KENNY'S CREEK QUEENIE D159#
SIRE: SJQP229 BLACK ANGUS JONAH LOMU P229^{SV} **DAM: SJQN77 BLACK ANGUS JENNIFER N77#**
 EF COMPLEMENT 8088^{PV} CONNEALY MENTOR 7374^{SV}
 BLACK ANGUS DREAM L47# BLACK ANGUS JENNIFER L211#
 BLACK ANGUS DREAM J79# BLACK ANGUS JENNIFER B65^{PV}

January 2025 TransTasman Angus Cattle Evaluation																	
TACE	Calving Ease Direct	Calving Ease Daughters	Gestation Length (days)	Bith Weight (kg)	200 Day Weight (kg)	400 Day Weight (kg)	600 Day Weight (kg)	MCW (kg)	Milk (kg)	Scrotal Size (cm)	CWT (kg)	EMA (sq cm)	Rib Fat (mm)	Rump Fat (mm)	RBY %	IMF %	Docility
EBV	+0.0	+1.6	-0.9	+6.1	+60	+108	+146	+131	+20	+2.3	+90	+5.5	-0.7	-1.3	+0.2	+1.8	+21
ACC	56%	47%	67%	73%	69%	68%	71%	66%	61%	68%	60%	59%	61%	61%	56%	63%	63%

Traits Observed: BWT,200WT,600WT,SC,Scan(EMA,Rib,Rump,IMF)

DOCILITY ST★R RATING



Scrotal Circumference: 41cm



173

Age: 20 months

3rd youngest bull in the sale. Mid-June drop son of the great Jonah Lomu P229. Jonah Lomu U342 is a high performance sire who ranks in the Top 6-14% of the Angus breed for 200 Growth, 400 Growth, 600 Growth and Carcase Weight. 4.5 Star Docility Rating.

Purchaser..... \$.....



Lot 27 BLACK ANGUS ROCKSTAR U293# Ident: SJQ23U293

Born: 22/4/2023 **Genetic Status:** AMFU,CAFU,DDFU,NHFU **Mating Type:** Natural **Registration Level:** HBR
 G A R PROPHET^{SV} VISIONTOPLINE ROYAL STOCKMAN[#]
 BALDRIDGE BEAST MODE B074^{PV} VISION UNANIMOUS 1418^{PV}
 BALDRIDGE ISABEL Y69[#] VISION EDELLA 665[#]
SIRE: SJQR70 BLACK ANGUS BEAST MODE R70^{SV} **DAM: SJQQ51 BLACK ANGUS WAMALTA Q51[#]**
 BLACK ANGUS BRAMBUIE F197^{SV} BLACK ANGUS BRAMBUIE F197^{SV}
 BLACK ANGUS EMPRESS J257[#] BLACK ANGUS WAMALTA L251[#]
 BLACK ANGUS EMPRESS F171[#] BLACK ANGUS WAMALTA F107[#]

January 2025 TransTasman Angus Cattle Evaluation																	
TACE	Calving Ease Direct	Calving Ease Daughters	Gestation Length (days)	Birth Weight (kg)	200 Day Weight (kg)	400 Day Weight (kg)	600 Day Weight (kg)	MCW (kg)	Milk (kg)	Scrotal Size (cm)	CWT (kg)	EMA (sq cm)	Rib Fat (mm)	Rump Fat (mm)	RBY %	IMF %	Docility
EBV	+0.7	+0.8	-2.6	+4.8	+53	+93	+113	+103	+12	+2.5	+63	+4.5	-1.7	-3.0	+1.1	+1.1	+33
ACC	55%	47%	67%	73%	69%	68%	74%	67%	59%	73%	60%	57%	59%	59%	53%	60%	60%

Traits Observed: BWT,200WT,600WT,SC,Scan(EMA,Rib,Rump,IMF),DOC

The great grand dam of Rockstar U293 is due on her 14th natural calf in 2025 - she's a peach! His sire, Black Angus Beast Mode R70 is breed elite for Foot Structure and Docility. U293 ranks in the Top 5% of the Angus breed for Feed Efficiency. Top 10% for Docility. Top 14% for Retail Beef Yield.

DOCILITY ST★R RATING
 ★ ★ ★ ★ ★
Scrotal Circumference: 41cm **Age:** 22 months

KPI
145

Purchaser:..... \$.....

Lot 28 BLACK ANGUS MOE U237# Ident: SJQ23U237

Born: 12/4/2023 **Genetic Status:** AMFU,CAFU,DDFU,NHFU **Mating Type:** AI **Registration Level:** HBR
 TE MANIA CALAMUS C46^{SV} MILWILLAH ELEVATOR H76^{PV}
 TE MANIA FOE F734^{SV} PINORA LEVI L73[#]
 TE MANIA DANDLOO D700[#] PINORA LILA G68[#]
SIRE: GTNM6 CHILTERN PARK MOE M6^{PV} **DAM: SJQQ172 BLACK ANGUS WHISTLING BIRD Q172[#]**
 HIDDEN VALLEY TIMEOUT A45^{SV} BLACK ANGUS NEWSLINE B37^{SV}
 STRATHEWEN TIMEOUT JADE F15^{PV} BLACK ANGUS WHISTLING BIRD E41[#]
 STRATHEWEN 1407 JADE C05^{PV} BLACK ANGUS WHISTLING BIRD A3[#]

January 2025 TransTasman Angus Cattle Evaluation																	
TACE	Calving Ease Direct	Calving Ease Daughters	Gestation Length (days)	Birth Weight (kg)	200 Day Weight (kg)	400 Day Weight (kg)	600 Day Weight (kg)	MCW (kg)	Milk (kg)	Scrotal Size (cm)	CWT (kg)	EMA (sq cm)	Rib Fat (mm)	Rump Fat (mm)	RBY %	IMF %	Docility
EBV	-6.0	+0.2	-1.5	+6.1	+52	+93	+120	+99	+18	+1.9	+71	+5.4	-2.3	-2.1	+0.9	+1.0	+29
ACC	61%	53%	82%	74%	71%	69%	74%	68%	63%	74%	63%	61%	64%	63%	58%	64%	64%

Traits Observed: GL,BWT,200WT,600WT,SC,Scan(EMA,Rib,Rump,IMF),DOC

Black Angus Moe U237's sire is renowned for good Feet and good Docility. U237's maternal grand sire, Levi L73 produces attractive larger framed females that are productive with neat udders. U237 will produce progeny that are high performance and docile. 4.5 Star Docility Rating.

DOCILITY ST★R RATING
 ★ ★ ★ ★ ★
Scrotal Circumference: 40.5cm **Age:** 22 months

KPI
121

Purchaser:..... \$.....

Lot 29 BLACK ANGUS NATIONWIDE U231# Ident: SJQ23U231

Born: 10/4/2023 **Genetic Status:** AMFU,CAFU,DDFU,NHFU **Mating Type:** AI **Registration Level:** APR
 G A R INGENUITY[#] PATHFINDER GENESIS G357^{PV}
 H P C A INTENSITY[#] PATHFINDER COMPLETE K22^{SV}
 G A R PREDESTINED 287L[#] PATHFINDER EQUATOR H756[#]
SIRE: NOR432 RENNYLEA NATIONWIDE N432^{PV} **DAM: THCP8 CLUDEN NEWRY P8[#]**
 TE MANIA BERKLEY B1^{PV} BASIN PAYWEIGHT 1682^{PV}
 RENNYLEA H367^{SV} CLUDEN NEWRY ARAWATEA M182[#]
 RENNYLEA F228[#] CLUDEN NEWRY ARAWATEA J119[#]

January 2025 TransTasman Angus Cattle Evaluation																	
TACE	Calving Ease Direct	Calving Ease Daughters	Gestation Length (days)	Birth Weight (kg)	200 Day Weight (kg)	400 Day Weight (kg)	600 Day Weight (kg)	MCW (kg)	Milk (kg)	Scrotal Size (cm)	CWT (kg)	EMA (sq cm)	Rib Fat (mm)	Rump Fat (mm)	RBY %	IMF %	Docility
EBV	+0.9	+4.8	-5.7	+5.6	+64	+111	+141	+128	+19	+0.7	+88	+7.1	+0.3	+0.2	+0.3	+1.7	+25
ACC	58%	51%	83%	74%	70%	69%	74%	68%	62%	73%	61%	61%	62%	62%	58%	64%	64%

Traits Observed: GL,BWT,200WT,600WT,SC,Scan(EMA,Rib,Rump,IMF),DOC

Another son of Rennylea Nationwide from a daughter of Pathfinder Complete. A pedigree you would see at Nick and Sarah's. Nationwide U231 is big on performance being ranked within the Top 7-12% of the Angus breed for 200 Growth, 400 growth and 600 Growth. Top 8% for Carcase Weight. Positive Fat.

DOCILITY ST★R RATING
 ★ ★ ★ ★ ★
Scrotal Circumference: 39cm **Age:** 22 months

KPI
182

Purchaser:..... \$.....



Lot 30 BLACK ANGUS 38 SPECIAL U289# Ident: SJQ23U289

Born: 21/4/2023 **Genetic Status:** AMFU,CAFU,DDFU,NHFU **Mating Type:** AI **Registration Level:** APR
 EF COMPLEMENT 8088^{PV}
 EF COMMANDO 1366^{PV}
 RIVERBEND YOUNG LUCY W1470#
SIRE: USA18229487 BALDRIDGE 38 SPECIAL^{PV}
 STYLES UPGRADE J59#
 BALDRIDGE ISABEL Y69#
 BALDRIDGE ISABEL T935#
DAM: SJQL125 BLACK ANGUS ENTERPRISE L125#
 MORDALLUP NET WORTH C170^{SV}
 BLACK ANGUS KELPIE G27#
 FUTURE ANGUS X48#

January 2025 TransTasman Angus Cattle Evaluation																	
TACE	Calving Ease Direct	Calving Ease Daughters	Gestation Length (days)	Birth Weight (kg)	200 Day Weight (kg)	400 Day Weight (kg)	600 Day Weight (kg)	MCW (kg)	Milk (kg)	Scrotal Size (cm)	CWT (kg)	EMA (sq cm)	Rib Fat (mm)	Rump Fat (mm)	RBY %	IMF %	Docility
EBV	+3.5	+5.2	-3.5	+3.2	+51	+88	+117	+99	+18	+1.8	+69	+2.5	-0.5	-1.7	+0.0	+2.3	+23
ACC	64%	55%	84%	75%	72%	71%	76%	70%	67%	75%	65%	63%	64%	64%	59%	65%	67%

Traits Observed: GL,BWT,200WT,600WT,SC,Scan(EMA,Rib,Rump,IMF),DOC

DOCILITY ST★R RATING

★★★★★

KPI
131

38 Special U289 is from a lovely H11 "Fig Jam" daughter who is due on her 9th natural calf this year. This fellow is ideal for heifer joining being well positioned with the combination of Calving Ease Direct and Low Birth Weight.

Scrotal Circumference: 40cm Age: 22 months

Purchaser..... \$.....

Lot 31 BLACK ANGUS NATIONWIDE U274# Ident: SJQ23U274

Born: 17/4/2023 **Genetic Status:** AMFU,CAFU,DDFU,NHFU **Mating Type:** AI **Registration Level:** HBR
 G A R INGENUITY#
 H P C A INTENSITY#
 G A R PREDESTINED 287L#
SIRE: NOR432 RENNYLEA NATIONWIDE N432^{PV}
 TE MANIA BERKLEY B1^{PV}
 RENNYLEA H367^{SV}
 RENNYLEA F228#
DAM: SJQP57 BLACK ANGUS EMPRESS P57#
 WILLOW FIELDS HANS H37^{PV}
 BLACK ANGUS EMPRESS L127#
 BLACK ANGUS W71 EMPRESS F193#

January 2025 TransTasman Angus Cattle Evaluation																	
TACE	Calving Ease Direct	Calving Ease Daughters	Gestation Length (days)	Birth Weight (kg)	200 Day Weight (kg)	400 Day Weight (kg)	600 Day Weight (kg)	MCW (kg)	Milk (kg)	Scrotal Size (cm)	CWT (kg)	EMA (sq cm)	Rib Fat (mm)	Rump Fat (mm)	RBY %	IMF %	Docility
EBV	+3.7	+4.9	-5.9	+4.7	+60	+104	+128	+124	+17	+1.7	+82	+4.0	-1.2	-2.0	+0.4	+1.3	+19
ACC	59%	52%	82%	74%	70%	69%	74%	67%	63%	73%	61%	60%	62%	62%	56%	63%	64%

Traits Observed: GL,BWT,200WT,600WT,SC,Scan(EMA,Rib,Rump,IMF)

DOCILITY ST★R RATING

★★★★★

KPI
157

A Nationwide son with the flexibility to use for heifer joining. He ranks in the Top 14-19% of the Angus breed for 200 Growth and 400 Growth - Hello weaner producers. Top 15% for Feed Efficiency. Top 16% for Carcase Weight. 4.5 Star Docility Rating.

Scrotal Circumference: 42cm Age: 22 months

Purchaser..... \$.....

Lot 32 BLACK ANGUS RANGELAND U257# Ident: SJQ23U257

Born: 14/4/2023 **Genetic Status:** AMFU,CAFU,DDFU,NHFU **Mating Type:** AI **Registration Level:** HBR
 BASIN RAINMAKER 2704#
 BASIN RAINMAKER 4404^{PV}
 BASIN JOY 1036#
SIRE: USA19590500 ELLINGSON RANGELAND^{PV}
 CTS REMEDY 1T01#
 EA EMBLYNETTE 7009#
 EA EMBLYNETTE 5241#
DAM: SJQP83 BLACK ANGUS WILCOOLA P83#
 ARDROSSAN EQUATOR A241^{PV}
 BLACK ANGUS WILLCOOLA H115#
 BLACK ANGUS NE X56 WILCOOLA C23^{SV}

January 2025 TransTasman Angus Cattle Evaluation																	
TACE	Calving Ease Direct	Calving Ease Daughters	Gestation Length (days)	Birth Weight (kg)	200 Day Weight (kg)	400 Day Weight (kg)	600 Day Weight (kg)	MCW (kg)	Milk (kg)	Scrotal Size (cm)	CWT (kg)	EMA (sq cm)	Rib Fat (mm)	Rump Fat (mm)	RBY %	IMF %	Docility
EBV	+6.4	+6.4	-4.3	+3.5	+54	+93	+116	+98	+20	+1.5	+76	+8.5	-1.0	-2.2	+1.5	+0.5	+17
ACC	58%	48%	83%	74%	70%	69%	74%	67%	61%	73%	61%	60%	61%	61%	56%	63%	64%

Traits Observed: GL,BWT,200WT,600WT,SC,Scan(EMA,Rib,Rump,IMF)

DOCILITY ST★R RATING

★★★★★

KPI
158

Rangeland U257 is well positioned as a heifer joining option with Calving Ease @ Plus 6.4 His A241 sired grand dam has been one of Ben's favourites having produced 11 outstanding natural calves. Rangeland U257 ranks within the Top 5% of the Angus breed for Retail Beef Yield. 8.6 for EMA

Scrotal Circumference: 39.5cm Age: 22 months

Purchaser..... \$.....



Lot 33 BLACK ANGUS HARRY TAYLOR U246# Ident: SJQ23U246

Born: 13/4/2023 **Genetic Status:** AMFU,CAFU,DDFU,NHFU **Mating Type:** AI **Registration Level:** HBR
 KM BROKEN BOW 002^{PV} ARDROSSAN ADMIRAL A2^{PV}
 VARILEK GEDDES 7068^{PV} ARDROSSAN ADMIRAL C57^{SV}
 VARILEK GOLDIE 5051 506^F ARDROSSAN PRINCESS W38^{PV}
SIRE: SJQR605 BLACK ANGUS GEDDES R605^{PV} **DAM: SJQL135 BLACK ANGUS PANDORA L135[#]**
 LAWSONS INCREDIBLE H803^{PV} BLACK ANGUS NEWSLINE B37^{SV}
 LAWSONS INCREDIBLE L882^E BLACK ANGUS PANDORA F87[#]
 LAWSONS REGENT J1425^{SV} BLACK ANGUS PANDORA B43[#]

January 2025 TransTasman Angus Cattle Evaluation																	
TACE	Calving Ease Direct	Calving Ease Daughters	Gestation Length (days)	Birth Weight (kg)	200 Day Weight (kg)	400 Day Weight (kg)	600 Day Weight (kg)	MCW (kg)	Milk (kg)	Scrotal Size (cm)	CWT (kg)	EMA (sq cm)	Rib Fat (mm)	Rump Fat (mm)	RBY %	IMF %	Docility
EBV	+6.0	+2.8	-7.9	+1.8	+45	+83	+103	+81	+22	+1.6	+61	+5.4	-1.3	-0.6	+0.3	+2.3	+22
ACC	54%	45%	82%	72%	68%	66%	67%	64%	59%	61%	58%	57%	59%	59%	53%	60%	59%

Traits Observed: GL,BWT,600WT,SC,Scan(EMA,Rib,Rump,IMF),DOC

DOCILITY ST★R RATING



KPI
125

Scrotal Circumference: 39.5cm

Age: 22 months

Harry Taylor U246 is a heifer joining specialist. Birth Weight at a low 1.8 and Calving Ease Direct at plus 6.0. His dam produced a \$16,000 son selling to Nicolai Farms in 2023.

Purchaser..... \$.....

Lot 34 BLACK ANGUS RANGELAND U260# Ident: SJQ23U260

Born: 14/4/2023 **Genetic Status:** AMFU,CAFU,DDFU,NHFU **Mating Type:** AI **Registration Level:** HBR
 BASIN RAINMAKER 2704[#] MILWILLAH ELEVATOR H76^{PV}
 BASIN RAINMAKER 4404^{PV} PINORA LEVI L73[#]
 BASIN JOY 1036[#] PINORA LILA G68[#]
SIRE: USA19590500 ELLINGSON RANGELAND^{PV} **DAM: SJQP323 BLACK ANGUS DREAM P323[#]**
 CTS REMEDY 1T01[#] BLACK ANGUS BRAMBUIE F197^{SV}
 EA EMBLYNETTE 7009[#] BLACK ANGUS DREAM K207[#]
 EA EMBLYNETTE 5241[#] VERMONT DREAM D441[#]

January 2025 TransTasman Angus Cattle Evaluation																	
TACE	Calving Ease Direct	Calving Ease Daughters	Gestation Length (days)	Birth Weight (kg)	200 Day Weight (kg)	400 Day Weight (kg)	600 Day Weight (kg)	MCW (kg)	Milk (kg)	Scrotal Size (cm)	CWT (kg)	EMA (sq cm)	Rib Fat (mm)	Rump Fat (mm)	RBY %	IMF %	Docility
EBV	+1.4	+4.6	-4.4	+5.0	+55	+93	+115	+108	+17	+1.6	+68	+7.5	-1.6	-3.5	+1.8	+0.2	+31
ACC	55%	42%	82%	75%	71%	70%	75%	68%	60%	73%	61%	58%	60%	59%	55%	60%	62%

Traits Observed: GL,BWT,200WT,600WT,SC,Scan(EMA,Rib,Rump,IMF),DOC

DOCILITY ST★R RATING



KPI
152

Scrotal Circumference: 40cm

Age: 22 months

3 x lines of maternal royalty in Rangeland U260's pedigree - P323, K207 and D441. K207 is due on her 9th natural calf this year, she's sound as a bell. U260 ranks in the Top 2% of the Angus breed for Retail Beef Yield. Top 13% for Feed Efficiency. Top 15% for Docility. 4.5 Star Docility Rating.

Purchaser..... \$.....

Lot 35 BLACK ANGUS MOE U271# Ident: SJQ23U271

Born: 16/4/2023 **Genetic Status:** AMFU,CAFU,DDF,NHFU **Mating Type:** AI **Registration Level:** HBR
 TE MANIA CALAMUS C46^{SV} MILWILLAH ELEVATOR H76^{PV}
 TE MANIA FOE F734^{SV} PINORA LEVI L73[#]
 TE MANIA DANDLOO D700[#] PINORA LILA G68[#]
SIRE: GTNM6 CHILTERN PARK MOE M6^{PV} **DAM: SJQP355 BLACK ANGUS EMPRESS P355[#]**
 HIDDEN VALLEY TIMEOUT A45^{SV} CONNEALY MENTOR 7374^{SV}
 STRATHEWEN TIMEOUT JADE F15^{PV} BLACK ANGUS EMPRESS K121[#]
 STRATHEWEN 1407 JADE C05^{PV} BLACK ANGUS EMPRESS F35[#]

January 2025 TransTasman Angus Cattle Evaluation																	
TACE	Calving Ease Direct	Calving Ease Daughters	Gestation Length (days)	Birth Weight (kg)	200 Day Weight (kg)	400 Day Weight (kg)	600 Day Weight (kg)	MCW (kg)	Milk (kg)	Scrotal Size (cm)	CWT (kg)	EMA (sq cm)	Rib Fat (mm)	Rump Fat (mm)	RBY %	IMF %	Docility
EBV	-1.4	+0.3	+0.4	+4.9	+50	+93	+122	+93	+19	+1.3	+74	+9.1	-1.2	-0.2	+1.3	+0.8	+29
ACC	61%	54%	82%	74%	71%	70%	75%	69%	63%	74%	63%	62%	64%	64%	58%	65%	65%

Traits Observed: GL,BWT,200WT,600WT,SC,Scan(EMA,Rib,Rump,IMF)

DOCILITY ST★R RATING



KPI
144

Scrotal Circumference: 40cm

Age: 22 months

5 Star Docility Rating. Straight 5's on all scores. A full brother sold to Nickson Farms in 2024. Moe U271 ranks in the Top 11% of the Angus breed for Retail Beef Yield. EMA at 9.1.

Purchaser..... \$.....

20% 50%



Lot 36 BLACK ANGUS NATIONWIDE U297# Ident: SJQ23U297

Born: 22/4/2023 **Genetic Status:** AMFU,CAFU,DDFU,NHFU **Mating Type:** AI **Registration Level:** APR

G A R INGENUITY#
H P C A INTENSITY#
G A R PREDESTINED 287L#
EF COMPLEMENT 8088^{PV}
BLACK ANGUS COMPLEMENT L51^{SV}
BLACK ANGUS EXPO J119#

SIRE: NORN432 RENNYLEA NATIONWIDE N432^{PV} **DAM: SJQP277 BLACK ANGUS ENTERPRISE P277#**

TE MANIA BERKLEY B1^{PV}
RENNYLEA H367^{SV}
RENNYLEA F228#
MORDALLUP NET WORTH C170^{SV}
BLACK ANGUS ENTERPRISE G31#
BLACK ANGUS ENTERPRISE B77#

January 2025 TransTasman Angus Cattle Evaluation

TACE	Calving Ease Direct	Calving Ease Daughters	Gestation Length (days)	Birth Weight (kg)	200 Day Weight (kg)	400 Day Weight (kg)	600 Day Weight (kg)	MCW (kg)	Milk (kg)	Scrotal Size (cm)	CWT (kg)	EMA (sq cm)	Rib Fat (mm)	Rump Fat (mm)	RBY %	IMF %	Docility
EBV	+1.4	+5.9	-1.2	+3.8	+53	+95	+123	+125	+19	+0.5	+79	+2.3	+0.7	+0.8	+0.2	+0.9	+33
ACC	57%	50%	82%	74%	71%	70%	74%	68%	63%	73%	61%	60%	62%	62%	56%	63%	64%

Traits Observed: GL,BWT,200WT,600WT,SC,Scan(EMA,Rib,Rump,IMF)

DOCILITY ST★R RATING



U297 is a Positive Fat, Low Birth Weight Nationwide son suitable for heifer joining. He ranks in the Top 12% of the Angus breed for Docility. Top 17% for Feed Efficiency.

Scrotal Circumference: 37.5cm

Age: 21.5 months

Purchaser..... \$.....

Lot 37 BLACK ANGUS ROCKSTAR U341# Ident: SJQ23U341

Born: 9/6/2023 **Genetic Status:** AMFU,CAFU,DDFU,NHFU **Mating Type:** Natural **Registration Level:** HBR

G A R PROPHET^{SV}
BALDRIDGE BEAST MODE B074^{PV}
BALDRIDGE ISABEL Y69#
WATTLETOP SITZ 458N E111^{SV}
BOORAGUL WT458N K11^{SV}
BOORAGUL GLAZE G140#

SIRE: SJQR70 BLACK ANGUS BEAST MODE R70^{SV} **DAM: SJQN189 BLACK ANGUS DT RIGHT TIME N189#**

BLACK ANGUS BRAMBUIE F197^{SV}
BLACK ANGUS EMPRESS J257#
BLACK ANGUS EMPRESS F171#
HYLINE RIGHT TIME 338#
DIAMOND TREE RIGHT TIME E54#
DIAMOND TREE MODEST Z4#

January 2025 TransTasman Angus Cattle Evaluation

TACE	Calving Ease Direct	Calving Ease Daughters	Gestation Length (days)	Birth Weight (kg)	200 Day Weight (kg)	400 Day Weight (kg)	600 Day Weight (kg)	MCW (kg)	Milk (kg)	Scrotal Size (cm)	CWT (kg)	EMA (sq cm)	Rib Fat (mm)	Rump Fat (mm)	RBY %	IMF %	Docility
EBV	-1.9	-0.4	-2.9	+5.9	+63	+105	+142	+122	+15	+3.8	+79	+5.4	-1.1	-2.0	+0.5	+1.0	+31
ACC	55%	47%	64%	72%	68%	66%	71%	65%	60%	70%	58%	57%	59%	59%	53%	61%	61%

Traits Observed: BWT,200WT,600WT,SC,Scan(EMA,Rib,Rump,IMF)

DOCILITY ST★R RATING



3rd youngest bull in the sale and a Rockstar. Rockstar U341, a Mid-June drop ranks in the Top 8-11% of the Angus breed for 200 Growth, 400 Growth and 600 Growth. Top 8% for Scrotal Size. Top 11-19% for Docility, Carcase Weight and Feed Efficiency. 188 KPI.

Scrotal Circumference: 41.5cm

Age: 20 months

Purchaser..... \$.....

Lot 38 BLACK ANGUS BLOCKBUSTER U267# Ident: SJQ23U267

Born: 16/4/2023 **Genetic Status:** AMFU,CAFU,DDC,NHFU **Mating Type:** AI **Registration Level:** HBR

MATAURI REALITY 839#
MILWILLAH REALITY K12^{PV}
MILWILLAH BARUNAH H8^{SV}
G A R RETAIL PRODUCT#
CONNELLY MENTOR 7374^{SV}
EXECUTA OF CONANGA 939#

SIRE: NENM367 KAROO MAIN EVENT M367^{SV} **DAM: SJQK121 BLACK ANGUS EMPRESS K121#**

ARDROSSAN EQUATOR A241^{PV}
KAROO DORIS G34#
KAROO DORIS Y137^{SV}
REMITALL SIZZLER 580S#
BLACK ANGUS EMPRESS F35#
BLACK ANGUS I87 EMPRESS B1#

January 2025 TransTasman Angus Cattle Evaluation

TACE	Calving Ease Direct	Calving Ease Daughters	Gestation Length (days)	Birth Weight (kg)	200 Day Weight (kg)	400 Day Weight (kg)	600 Day Weight (kg)	MCW (kg)	Milk (kg)	Scrotal Size (cm)	CWT (kg)	EMA (sq cm)	Rib Fat (mm)	Rump Fat (mm)	RBY %	IMF %	Docility
EBV	+4.0	+2.3	-3.6	+2.8	+46	+88	+110	+89	+16	+1.6	+64	+5.0	+2.0	+4.3	-0.2	+2.5	+14
ACC	58%	49%	83%	75%	71%	70%	74%	68%	64%	73%	62%	60%	62%	62%	56%	63%	65%

Traits Observed: GL,BWT,200WT,600WT,SC,Scan(EMA,Rib,Rump,IMF)

DOCILITY ST★R RATING



Top 3% of the Angus breed for Positive Fat and suitable for heifer joining. Karoo Main Event progeny are good footed, positive fat and are born easily.

Scrotal Circumference: 41cm

Age: 22 months

Purchaser..... \$.....



Lot 39 BLACK ANGUS RANGELAND U281^{SV} Ident: SJQ23U281
Born: 18/4/2023 Genetic Status: AMFU,CAFU,DDFU,NHFU Mating Type: AI Registration Level: APR

BASIN RAINMAKER 2704[#]
 BASIN RAINMAKER 4404^{PV}
 BASIN JOY 1036[#]

SIRE: USA19590500 ELLINGSON RANGELAND^{PV}

DAM: UNKNOWN UNKNOWN

CTS REMEDY 1T01[#]
 EA EMBLYNETTE 7009[#]
 EA EMBLYNETTE 5241[#]

January 2025 TransTasman Angus Cattle Evaluation																	
TACE	Calving Ease Direct	Calving Ease Daughters	Gestation Length (days)	Birth Weight (kg)	200 Day Weight (kg)	400 Day Weight (kg)	600 Day Weight (kg)	MCW (kg)	Milk (kg)	Scrotal Size (cm)	CWT (kg)	EMA (sq cm)	Rib Fat (mm)	Rump Fat (mm)	RBY %	IMF %	Docility
EBV	+4.6	+6.4	-2.3	+3.5	+42	+74	+90	+73	+15	+1.8	+53	+5.1	+0.8	-0.2	+1.2	+0.1	+20
ACC	48%	35%	59%	70%	65%	64%	70%	62%	52%	71%	55%	50%	52%	52%	47%	53%	54%

Traits Observed: BWT,200WT,600WT,SC,Scan(EMA,Rib,Rump,IMF)

DOCILITY ST★R RATING



Black Angus Rangeland U281's dna has qualified to his US AI sire, but is not conclusive to his dam. Assess him in the flesh and you be the judge. He is a Glatz Black Angus - Proper Beef Bull.

Scrotal Circumference: 42cm

Age: 22 months

Purchaser..... \$.....

Lot 40 BLACK ANGUS DUSTY MARTIN U314[#] Ident: SJQ23U314
Born: 6/5/2023 Genetic Status: AMFU,CAFU,DDFU,NHFU Mating Type: Natural Registration Level: APR

G A R PROPHET^{SV}
 CLUNES CROSSING DUSTY M13^{PV}
 CLUNES CROSSING GLORIOUS G1^{SV}

VERMONT DRAMBUIE D057^{PV}
 BLACK ANGUS BRAMBUIE F197^{SV}
 VERMONT MARTINA D442[#]

SIRE: SJQR608 BLACK ANGUS DUSTY MARTIN R608^{PV}

DAM: SJQL257 BLACK ANGUS WILCOOLA L257[#]

G A R ANTICIPATION[#]
 YOOTHAMURRA L81^{SV}
 LAWSONS DINKY DI E1121^{SV}

BLACK ANGUS NEWSLINE B70^{SV}
 BLACK ANGUS WILCOOLA E87[#]
 BLACK ANGUS WILCOOLA C121[#]

January 2025 TransTasman Angus Cattle Evaluation																	
TACE	Calving Ease Direct	Calving Ease Daughters	Gestation Length (days)	Birth Weight (kg)	200 Day Weight (kg)	400 Day Weight (kg)	600 Day Weight (kg)	MCW (kg)	Milk (kg)	Scrotal Size (cm)	CWT (kg)	EMA (sq cm)	Rib Fat (mm)	Rump Fat (mm)	RBY %	IMF %	Docility
EBV	+1.6	+4.2	-4.9	+4.3	+54	+92	+113	+95	+11	+2.7	+53	+7.3	-1.3	-2.3	+0.8	+1.6	+17
ACC	53%	46%	65%	73%	69%	68%	74%	67%	60%	73%	60%	57%	59%	59%	53%	61%	60%

Traits Observed: BWT,200WT,600WT,SC,Scan(EMA,Rib,Rump,IMF)

DOCILITY ST★R RATING



Dusty Martin has not retired - he resides at Avenue awaiting his next appointment. Dusty Martin U314's dam has been a prolific bull breeder at Glatz Black Angus. She is due on her 9th natural calf and has bred top end bulls selling to some good judges like David Fenton and Keynton Station. U314 is strong for Feed Efficiency, EMA and Retail Beef Yield.

Scrotal Circumference: 42cm

Age: 21 months

Purchaser..... \$.....

Lot 41 BLACK ANGUS DUSTY MARTIN U321[#] Ident: SJQ23U321
Born: 13/5/2023 Genetic Status: AMFU,CAFU,DDFU,NHFU Mating Type: Natural Registration Level: HBR

G A R PROPHET^{SV}
 CLUNES CROSSING DUSTY M13^{PV}
 CLUNES CROSSING GLORIOUS G1^{SV}

EF COMPLEMENT 8088^{PV}
 BLACK ANGUS COMPLEMENT L51^{SV}
 BLACK ANGUS EXPO J119[#]

SIRE: SJQR608 BLACK ANGUS DUSTY MARTIN R608^{PV}

DAM: SJQP125 BLACK ANGUS BUGSY P125[#]

G A R ANTICIPATION[#]
 YOOTHAMURRA L81^{SV}
 LAWSONS DINKY DI E1121^{SV}

BLACK ANGUS EQUATOR A241 H11^{SV}
 BLACK ANGUS BUGSY L15[#]
 BLACK ANGUS BUGSY E113[#]

January 2025 TransTasman Angus Cattle Evaluation																	
TACE	Calving Ease Direct	Calving Ease Daughters	Gestation Length (days)	Birth Weight (kg)	200 Day Weight (kg)	400 Day Weight (kg)	600 Day Weight (kg)	MCW (kg)	Milk (kg)	Scrotal Size (cm)	CWT (kg)	EMA (sq cm)	Rib Fat (mm)	Rump Fat (mm)	RBY %	IMF %	Docility
EBV	+3.2	+7.1	-6.9	+3.0	+55	+91	+114	+89	+11	+1.6	+65	+8.3	-1.7	-2.0	+0.7	+2.1	+21
ACC	54%	47%	65%	72%	68%	66%	72%	65%	59%	71%	58%	57%	59%	59%	53%	62%	61%

Traits Observed: BWT,200WT,600WT,SC,Scan(EMA,Rib,Rump,IMF)

DOCILITY ST★R RATING



Heifer suitable Dusty Martin son from a Selwood daughter - interesting. Dusty Martin U321 offers a Low Birth Weight at 2.9 and ranks in the Top 14% of the Angus breed for Calving Ease Daughters. Top 15% for Short Gestation Length. High EMA. Related to Lot 25 in this sale.

Scrotal Circumference: 39cm

Age: 21 months

Purchaser..... \$.....



Lot 42 BLACK ANGUS NATIONWIDE U290# Ident: SJQ23U290

Born: 22/4/2023 **Genetic Status:** AMFU,CAFU,DDFU,NHFU **Mating Type:** AI **Registration Level:** HBR
 G A R INGENUITY#
 H P C A INTENSITY#
 G A R PREDESTINED 287L#

SIRE: NORN432 RENNYLEA NATIONWIDE N432^{PV} **DAM: SJQN247 BLACK ANGUS KAYE N247#**
 TE MANIA BERKLEY B1^{PV}
 RENNYLEA H367^{SV}
 RENNYLEA F228#
 MILLAH MURRAH EQUATOR D78^{PV}
 KENNY'S CREEK EQUATOR J222^{SV}
 KENNY'S CREEK QUEENIE D159#
 BLACK ANGUS NEWSLINE B37^{SV}
 BLACK ANGUS KAYE E25#
 BLACK ANGUS KAYE A25#

January 2025 TransTasman Angus Cattle Evaluation																	
TACE	Calving Ease Direct	Calving Ease Daughters	Gestation Length (days)	Birth Weight (kg)	200 Day Weight (kg)	400 Day Weight (kg)	600 Day Weight (kg)	MCW (kg)	Milk (kg)	Scrotal Size (cm)	CWT (kg)	EMA (sq cm)	Rib Fat (mm)	Rump Fat (mm)	RBY %	IMF %	Docility
EBV	-0.7	+5.2	-3.7	+4.0	+56	+100	+120	+122	+18	+1.5	+79	+4.6	-0.8	-1.6	+0.7	+0.6	+13
ACC	57%	49%	82%	75%	71%	70%	75%	68%	63%	74%	61%	60%	62%	61%	56%	63%	63%

Traits Observed: GL,BWT,200WT,600WT,SC,Scan(EMA,Rib,Rump,IMF),DOC

Nationwide U290's dam is due on her 8th natural calf in 2025. His grand dam produced 8 natural calves. U290 ranks in the Top 6% of the Angus breed for Feed Efficiency. Top 21-32% for Calving Ease Daughters, Carcase Weight and Retail Beef Yield. Top 26-27% for 200 Growth and 400 Growth.

DOCILITY ST★R RATING



KPI
126

Scrotal Circumference: 41cm

Age: 22 months

Purchaser..... \$.....

Lot 43 BLACK ANGUS BLOCKBUSTER U249# Ident: SJQ23U249

Born: 14/4/2023 **Genetic Status:** AMFU,CAFU,DDFU,NHFU **Mating Type:** AI **Registration Level:** HBR
 MATAURI REALITY 839#
 MILWILLAH REALITY K12^{PV}
 MILWILLAH BARUNAH H8^{SV}

SIRE: NENM367 KAROO MAIN EVENT M367^{SV} **DAM: SYAN323 STONEY POINT BLACKBIRD N323^{SV}**
 ARDROSSAN EQUATOR A241^{PV}
 KAROO DORIS G34#
 KAROO DORIS Y137^{SV}
 MOHNEN LONG HAUL 502^{SV}
 STONEY POINT LOOKER L46^{SV}
 STONEY POINT ROMANTIC G42#
 DUNOON MIDLAND A017^{PV}
 VERMONT BLACKBIRD E038#
 VERMONT BLACKBIRD C104#

January 2025 TransTasman Angus Cattle Evaluation																	
TACE	Calving Ease Direct	Calving Ease Daughters	Gestation Length (days)	Birth Weight (kg)	200 Day Weight (kg)	400 Day Weight (kg)	600 Day Weight (kg)	MCW (kg)	Milk (kg)	Scrotal Size (cm)	CWT (kg)	EMA (sq cm)	Rib Fat (mm)	Rump Fat (mm)	RBY %	IMF %	Docility
EBV	-2.0	-2.5	-3.0	+6.5	+55	+104	+141	+135	+18	+3.0	+77	+4.0	-1.0	-0.2	+0.3	+1.4	+10
ACC	60%	50%	83%	75%	74%	73%	75%	70%	66%	75%	64%	63%	64%	64%	57%	67%	68%

Traits Observed: GL,BWT,200WT,600WT,SC,Scan(EMA,Rib,Rump,IMF),DOC

Plenty of Growth, Fertility and Carcase Weight in this Karoo Main Event son. Blockbuster U249 ranks in the Top 12-18% of the Angus breed for 400 Growth and 600 Growth. Top 21% for Scrotal Size. Top 25% for Carcase Weight and Feed Efficiency. Ideal for self replacing beef producers.

DOCILITY ST★R RATING



KPI
142

Scrotal Circumference: 43cm

Age: 22 months

Purchaser..... \$.....

Lot 44 BLACK ANGUS MAKAHU U308# Ident: SJQ23U308

Born: 1/5/2023 **Genetic Status:** AMFU,CAFU,DDFU,NHFU **Mating Type:** Natural **Registration Level:** HBR
 SCHURRTOP REALITY X723#
 MATAURI REALITY 839#
 MATAURI 06663#

SIRE: QLLM602 GLENOCH-JK MAKAHU M602^{SV} **DAM: SYAN52 STONEY POINT PRIMROSE N52^{SV}**
 GLENOCH HINMAN H221^{SV}
 GLENOCH-JK ANN K615^{SV}
 GLENOCH-JK ANN F606^{SV}
 TUWHARETOA REGENT D145^{PV}
 PRIME JUGGERNAUT J15^{SV}
 PRIME LOWAN F20^{SV}
 SITZ WISDOM 481T#
 STONEY POINT PRIMROSE K253^{SV}
 STONEY POINT PRIMROSE H182#

January 2025 TransTasman Angus Cattle Evaluation																	
TACE	Calving Ease Direct	Calving Ease Daughters	Gestation Length (days)	Birth Weight (kg)	200 Day Weight (kg)	400 Day Weight (kg)	600 Day Weight (kg)	MCW (kg)	Milk (kg)	Scrotal Size (cm)	CWT (kg)	EMA (sq cm)	Rib Fat (mm)	Rump Fat (mm)	RBY %	IMF %	Docility
EBV	+4.1	+4.2	-7.6	+3.9	+50	+87	+112	+100	+21	+1.5	+70	+9.4	+1.2	-0.3	+0.6	+1.4	+22
ACC	64%	57%	74%	75%	75%	73%	76%	73%	69%	76%	66%	66%	67%	67%	61%	69%	70%

Traits Observed: BWT,200WT,600WT,SC,Scan(EMA,Rib,Rump,IMF),DOC

Makahu U308 is an elite heifer joining option sired by our own Makahu. Progeny of Makahu are sound, docile and go the distance. U308 combines all the fundamental traits including Calving Ease, Short Gestation Length, Moderate Birth Weight and Milk, all wrapped up in Positive Fat. High EMA. 4.5 Star Docility Rating.

DOCILITY ST★R RATING



KPI
158

Scrotal Circumference: 38.5cm

Age: 21 months

Purchaser..... \$.....



Lot 45 BLACK ANGUS RANGELAND U204# Ident: SJQ23U204

Born: 1/4/2023 **Genetic Status:** AMFU,CAFU,DDF,NHFU **Mating Type:** AI **Registration Level:** APR
 BASIN RAINMAKER 2704#
 BASIN RAINMAKER 4404^{PV}
 BASIN JOY 1036#
SIRE: USA19590500 ELLINGSON RANGELAND^{PV} **DAM:** SJQL143 BLACK ANGUS KELPIE L143#
 CTS REMEDY 1T01#
 EA EMBLYNETTE 7009#
 EA EMBLYNETTE 5241#
 RENNYLEA EDMUND E11^{PV}
 WILLOW FIELDS HANS H37^{PV}
 WILLOW FIELDS BARA F13^{PV}
 GALWAY EQUATION E16^{SV}
 BLACK ANGUS KELPIE J253#
 BLACK ANGUS KELPIE G205#

January 2025 TransTasman Angus Cattle Evaluation																	
TACE	Calving Ease Direct	Calving Ease Daughters	Gestation Length (days)	Birth Weight (kg)	200 Day Weight (kg)	400 Day Weight (kg)	600 Day Weight (kg)	MCW (kg)	Milk (kg)	Scrotal Size (cm)	CWT (kg)	EMA (sq cm)	Rib Fat (mm)	Rump Fat (mm)	RBY %	IMF %	Docility
EBV	+7.5	+4.6	-7.1	+2.8	+45	+76	+91	+67	+19	+1.5	+55	+6.8	+1.4	+0.4	+1.0	+1.0	+21
ACC	56%	44%	83%	75%	71%	70%	75%	68%	62%	74%	61%	59%	61%	60%	55%	62%	63%

Traits Observed: GL,BWT,200WT,600WT,SC,Scan(EMA,Rib,Rump,IMF)

The outstanding run of Ellingson Rangeland sons keep rolling in over the Prairies. Rangeland U204 is an ideal heifer joining prospect. His dam is due on her 9th natural calf in 2025. U204 ranks in the Top 11% of the Angus breed for Calving Ease Direct. Top 14% for Short Gestation Length. Top 19% for Positive Fat. EMA @ Plus 6.8. Docility Star Rating 4.5

DOCILITY ST★R RATING
 ★ ★ ★ ★ ★
Scrotal Circumference: 41.5cm
Age: 22.5 months

KPI
138

Purchaser:..... \$.....

Lot 46 BLACK ANGUS 38 SPECIAL U227# Ident: SJQ23U227

Born: 9/4/2023 **Genetic Status:** AMFU,CAFU,DDFU,NHFU **Mating Type:** AI **Registration Level:** HBR
 EF COMPLEMENT 8088^{PV}
 EF COMMANDO 1366^{PV}
 RIVERBEND YOUNG LUCY W1470#
SIRE: USA18229487 BALDRIDGE 38 SPECIAL^{PV} **DAM:** SYAP068 STONEY POINT BLACKBIRD P068^{SV}
 STYLES UPGRADE J59#
 BALDRIDGE ISABEL Y69#
 BALDRIDGE ISABEL T935#
 BASIN FRANCHISE P142#
 EF COMPLEMENT 8088^{PV}
 EF EVERELDA ENTENSE 6117#
 ARDROSSAN EQUATOR A241^{PV}
 STONEY POINT BLACKBIRD K541#
 VERMONT BLACKBIRD E038#

January 2025 TransTasman Angus Cattle Evaluation																	
TACE	Calving Ease Direct	Calving Ease Daughters	Gestation Length (days)	Birth Weight (kg)	200 Day Weight (kg)	400 Day Weight (kg)	600 Day Weight (kg)	MCW (kg)	Milk (kg)	Scrotal Size (cm)	CWT (kg)	EMA (sq cm)	Rib Fat (mm)	Rump Fat (mm)	RBY %	IMF %	Docility
EBV	+7.6	+5.1	-8.2	+2.1	+58	+98	+130	+101	+18	+2.5	+73	+5.9	+1.1	+0.1	-0.3	+2.0	+19
ACC	68%	61%	84%	76%	76%	75%	77%	74%	71%	77%	68%	68%	69%	69%	62%	71%	72%

Traits Observed: GL,BWT,200WT,600WT,SC,Scan(EMA,Rib,Rump,IMF),DOC

38 Special U227 has a magnificent data set. KPI @ 199. Top 7-10% of the Angus breed for Calving Ease Direct and Short Gestation Length. Top 10-14% for Low Birth Weight and Days to Calving. Top 13-16% for ABI and ABL. Top 21-32% for 200 Growth, 400 Growth and 600 Growth. All wrapped up in Positive Fat. Feast your eyes. 4.5 Star Docility Rating.

DOCILITY ST★R RATING
 ★ ★ ★ ★ ★
Scrotal Circumference: 42cm
Age: 22 months

KPI
199

Purchaser:..... \$.....

Lot 47 BLACK ANGUS NATIONWIDE U283# Ident: SJQ23U283

Born: 19/4/2023 **Genetic Status:** AMFU,CAFU,DDFU,NHFU **Mating Type:** AI **Registration Level:** HBR
 G A R INGENUITY#
 H P C A INTENSITY#
 G A R PREDESTINED 287L#
SIRE: NOR432 RENNYLEA NATIONWIDE N432^{PV} **DAM:** SJQP123 BLACK ANGUS ROSEBUD P123#
 TE MANIA BERKLEY B1^{PV}
 RENNYLEA H367^{SV}
 RENNYLEA F228#
 RENNYLEA EDMUND E11^{PV}
 WILLOW FIELDS HANS H37^{PV}
 WILLOW FIELDS BARA F13^{PV}
 COONAMBLE ELEVATOR E11^{PV}
 BLACK ANGUS ROSEBUD M75#
 BLACK ANGUS ROSEBUD G19#

January 2025 TransTasman Angus Cattle Evaluation																	
TACE	Calving Ease Direct	Calving Ease Daughters	Gestation Length (days)	Birth Weight (kg)	200 Day Weight (kg)	400 Day Weight (kg)	600 Day Weight (kg)	MCW (kg)	Milk (kg)	Scrotal Size (cm)	CWT (kg)	EMA (sq cm)	Rib Fat (mm)	Rump Fat (mm)	RBY %	IMF %	Docility
EBV	+6.4	+6.1	-5.2	+1.3	+46	+85	+104	+91	+19	+0.8	+62	+4.4	+0.2	+0.3	+0.4	+1.7	+24
ACC	57%	50%	82%	74%	71%	69%	74%	67%	63%	66%	61%	60%	62%	62%	56%	63%	64%

Traits Observed: GL,BWT,200WT,600WT,Scan(EMA,Rib,Rump,IMF)

Top 7% of the Angus breed for Low Birth Weight. Top 18% for Calving Ease Direct. Top 23% for Calving Ease Daughters. Positive Fat. 4.5 Star Docility Rating.

DOCILITY ST★R RATING
 ★ ★ ★ ★ ★
Scrotal Circumference: tbc
Age: 22 months

KPI
136

Purchaser:..... \$.....



Lot 48 BLACK ANGUS 38 SPECIAL U284# Ident: SJQ23U284

Born: 19/4/2023 **Genetic Status:** AMFU,CAFU,DDFU,NHFU **Mating Type:** AI **Registration Level:** HBR
 EF COMPLEMENT 8088^{PV} RENNYLEA EDMUND E11^{PV}
 EF COMMANDO 1366^{PV} WILLOW FIELDS HANS H37^{PV}
 RIVERBEND YOUNG LUCY W1470# WILLOW FIELDS BARA F13^{PV}

SIRE: USA18229487 BALDRIDGE 38 SPECIAL^{PV} **DAM:** SJQM311 BLACK ANGUS WILCOOLA M311#
 STYLES UPGRADE J59# MORDALLUP BLAZER C521^{SV}
 BALDRIDGE ISABEL Y69# BLACK ANGUS WILCOOLA G37#
 BALDRIDGE ISABEL T935# BLACK ANGUS NE X56 WILCOOLA C23^{SV}

January 2025 TransTasman Angus Cattle Evaluation																	
TACE	Calving Ease Direct	Calving Ease Daughters	Gestation Length (days)	Birth Weight (kg)	200 Day Weight (kg)	400 Day Weight (kg)	600 Day Weight (kg)	MCW (kg)	Milk (kg)	Scrotal Size (cm)	CWT (kg)	EMA (sq cm)	Rib Fat (mm)	Rump Fat (mm)	RBY %	IMF %	Docility
EBV	+5.9	+0.7	-2.2	+2.2	+44	+77	+96	+70	+15	+1.6	+51	+6.1	+0.6	-1.1	+0.9	+1.8	+12
ACC	63%	54%	82%	75%	71%	69%	74%	69%	65%	74%	63%	61%	63%	63%	58%	64%	65%

Traits Observed: GL,BWT,200WT,600WT,SC,Scan(EMA,Rib,Rump,IMF)

DOCILITY ST★R RATING



KPI
110

38 Special U284 is ideal for heifer joining. He ranks in the Top 15% of the Angus breed for Low Birth Weight. Top 21% for Calving Ease Direct. Positive Fat. His productive dam is due on her 7th natural calf in 2025.

Scrotal Circumference: 40cm

Age: 22 months

Purchaser..... \$.....

Lot 49 BLACK ANGUS DUSTY MARTIN U317# Ident: SJQ23U317

Born: 9/5/2023 **Genetic Status:** AMFU,CAFU,DDFU,NHFU **Mating Type:** Natural **Registration Level:** APR
 G A R PROPHET^{SV} ARDROSSAN EQUATOR A241^{PV}
 CLUNES CROSSING DUSTY M13^{PV} BLACK ANGUS EQUATOR A241 H11^{SV}
 CLUNES CROSSING GLORIOUS G1^{SV} BLACK ANGUS X56 WILCOOLA D101^{SV}

SIRE: SJQR608 BLACK ANGUS DUSTY MARTIN R608^{PV} **DAM:** SJQL9 BLACK ANGUS AMANDA L9#
 G A R ANTICIPATION# BT RIGHT TIME 24J#
 YOOTHAMURRA L81^{SV} BLACK ANGUS AMANDA J85#
 LAWSONS DINKY DI E1121^{SV} BLACK ANGUS AMANDA F11#

January 2025 TransTasman Angus Cattle Evaluation																	
TACE	Calving Ease Direct	Calving Ease Daughters	Gestation Length (days)	Birth Weight (kg)	200 Day Weight (kg)	400 Day Weight (kg)	600 Day Weight (kg)	MCW (kg)	Milk (kg)	Scrotal Size (cm)	CWT (kg)	EMA (sq cm)	Rib Fat (mm)	Rump Fat (mm)	RBY %	IMF %	Docility
EBV	-3.9	+2.4	-6.0	+4.9	+56	+88	+102	+81	+8	+3.5	+54	+7.5	-2.7	-3.0	+1.0	+1.6	+21
ACC	55%	48%	68%	73%	69%	67%	72%	66%	60%	71%	59%	58%	60%	60%	54%	62%	61%

Traits Observed: BWT,200WT,600WT,SC,Scan(EMA,Rib,Rump,IMF)

DOCILITY ST★R RATING



KPI
110

The maternal pedigree supporting Dusty Martin U317 sets him up to be a breeder of sound and productive replacement females. You could not have painted his dam and grand dam any better. U317 ranks in the Top 12% of the Angus breed for Scrotal Size. Top 18% for Retail Beef Yield. Top 23% for Days to Calving.

Scrotal Circumference: 44cm

Age: 21.5 months

Purchaser..... \$.....

Lot 50 BLACK ANGUS JONAH LOMU U346# Ident: SJQ23U346

Born: 16/6/2023 **Genetic Status:** AMFU,CAFU,DDF,NHFU **Mating Type:** Natural **Registration Level:** HBR
 TE MANIA EMPEROR E343^{PV} MATAURI REALITY 839#
 STORTH OAKS JACK J7^{SV} KAROO KNOCKOUT K176^{SV}
 STORTH OAKS G183# KAROO JEDDA H213#

SIRE: SJQP229 BLACK ANGUS JONAH LOMU P229^{SV} **DAM:** SJQP71 BLACK ANGUS BUGSY P71#
 EF COMPLEMENT 8088^{PV} DYLEMMA RADAR W42^{SV}
 BLACK ANGUS DREAM L47# BLACK ANGUS W42 BUGSY A89#
 BLACK ANGUS DREAM J79# FUTURE ANGUS BUGSY V15#

January 2025 TransTasman Angus Cattle Evaluation																	
TACE	Calving Ease Direct	Calving Ease Daughters	Gestation Length (days)	Birth Weight (kg)	200 Day Weight (kg)	400 Day Weight (kg)	600 Day Weight (kg)	MCW (kg)	Milk (kg)	Scrotal Size (cm)	CWT (kg)	EMA (sq cm)	Rib Fat (mm)	Rump Fat (mm)	RBY %	IMF %	Docility
EBV	+7.0	+7.5	-4.6	+2.2	+48	+91	+116	+108	+16	+3.0	+62	+6.7	+0.1	-0.1	+0.6	+1.9	+37
ACC	57%	49%	65%	73%	69%	67%	70%	66%	61%	68%	60%	59%	61%	61%	56%	63%	63%

Traits Observed: BWT,200WT,600WT,SC,Scan(EMA,Rib,Rump,IMF)

DOCILITY ST★R RATING



KPI
200

2nd highest KPI in the sale @ 200! Second youngest bull in the sale, Mid-June drop. Top 6% of the Angus breed for Docility. Top 11-14% for Calving Ease Direct and Calving Ease Daughters. Top 15% for Low Birth Weight. Positive Fat.

Scrotal Circumference: 42cm

Age: 20 months

Purchaser..... \$.....



Lot 51 BLACK ANGUS MAKAHU U349# **Ident: SJQ23U349**
Born: 24/6/2023 **Genetic Status:** AMFU,CAFU,DDFU,NHFU **Mating Type:** Natural **Registration Level:** HBR
 SCHURRTOP REALITY X723# BANGADANG WESTERN EXPRESS E10^{SV}
 MATAURI REALITY 839# TEXAS HOLD 'EM H126^{PV}
 MATAURI 06663# TEXAS UNDINE Z183^{PV}
SIRE: QLLM602 GLENOCH-JK MAKAHU M602^{SV} **DAM: SJQM9 BLACK ANGUS MELISSA M9#**
 GLENOCH HINMAN H221^{SV} CONNEALY MENTOR 7374^{SV}
 GLENOCH-JK ANN K615^{SV} BLACK ANGUS MELISSA K17#
 GLENOCH-JK ANN F606^{SV} GRALUNGA MELLISA C68#

January 2025 TransTasman Angus Cattle Evaluation																	
TACE	Calving Ease Direct	Calving Ease Daughters	Gestation Length (days)	Birth Weight (kg)	200 Day Weight (kg)	400 Day Weight (kg)	600 Day Weight (kg)	MCW (kg)	Milk (kg)	Scrotal Size (cm)	CWT (kg)	EMA (sq cm)	Rib Fat (mm)	Rump Fat (mm)	RBY %	IMF %	Docility
EBV	+4.5	+0.3	-6.3	+4.5	+48	+85	+109	+105	+18	+3.2	+61	+8.0	+0.4	-1.1	+0.9	+0.8	+16
ACC	62%	54%	71%	74%	71%	70%	72%	69%	66%	70%	63%	62%	63%	63%	58%	65%	66%

Traits Observed: BWT,200WT,600WT,SC,Scan(EMA,Rib,Rump,IMF)

DOCILITY ST★R RATING



Scrotal Circumference: 40cm



Age: 19.5 months

Youngest bull in the sale. Late-June drop. Perfect for heifer joining. U349 has 3 x 'A' grade cows behind him - M9, K17 and C68. He ranks in the Top 19% of the Angus breed for Scrotal Size. Positive Fat.

Purchaser..... \$.....

"We sincerely thank our loyal clients, agents and friends for their continued support of Glatz Black Angus."

Ben & Samantha Glatz



Ben, Samantha and Jack Glatz, Gordon Wood with Mark and Leah Jacob.

**Black Angus 38 Special T20 – top price of \$35,000 in 2024, selling to Mark and Leah Jacob.*



Understanding Estimated Breeding Values (EBVs)

Estimated Breeding Values (EBVs) are predictions of an animal's genetic merit, based on available performance data on the individual and its relatives. EBVs are expressed in the units of measurement for each particular trait. They are shown as +ive or -ive differences from the breed base. As the breed base is set to a historical benchmark, the average EBVs of animals in each year drop has changed over time as a result of genetic change within the breed. The current breed averages are shown below. These averages provide a useful benchmark for comparing EBVs for animals.

JANUARY ANGUS BREEDPLAN

	Calving Ease		Birth		Growth				Fertility				Carcase				
	CEDir	CEDtrs	GL	BW	200	400	600	MCW	Milk	SS	CWT	EMA	RIB	P8	RBY	IMF	DOC
Brd Avg	+2.3	+3.2	-4.6	+3.9	+52	+94	+121	+103	+17	+2.2	+69	+6.6	+0.1	-0.2	+0.4	+2.5	+21

*Breed average represents the average EBV of all 2023 drop Australian Angus and Angus-influenced seedstock animals analysed in the January 2025 Transfarnman Angus Cattle evaluation.

Category	Trait	Unit	Description	Interpretation
Calving Ease/Birth	CEDir	%	Genetic differences in the ability of a sire's calves to be born unassisted from 2 year old heifers.	Higher EBVs indicate fewer calving difficulties in 2 year old heifers.
	CEDtrs	%	Genetic differences in the ability of a sire's daughters to calve unassisted at 2 years of age.	Higher EBVs indicate fewer calving difficulties in 2 year old heifers.
	GL	days	Genetic differences between animals in the length of time from the date of conception to the birth of the calf.	Lower EBVs indicate shorter gestation length.
	BW	kg	Genetic differences between animals in calf weight at birth.	Lower EBVs indicate lighter birth weight.
Growth	200 Day	kg	Genetic differences between animals in live weight at 200 days of age due to genetics for growth.	Higher EBVs indicate heavier live weight.
	400 Day	kg	Genetic differences between animals in live weight at 400 days of age.	Higher EBVs indicate heavier live weight.
	600 Day	kg	Genetic differences between animals in live weight at 600 days of age.	Higher EBVs indicate heavier live weight.
Maternal	MCH	cm	Genetic differences between animals in the height of mature females.	Higher EBVs indicate taller mature females.
	MBC	score	Genetic differences between animals in the body condition of mature females.	Higher EBVs indicate more body condition of mature females.
	MCW	kg	Genetic differences between animals in live weight of cows at 5 years of age.	Higher EBVs indicate heavier mature weight.
	Milk	kg	Genetic differences between animals in live weight at 200 days of age due to the maternal contribution of its dam.	Higher EBVs indicate heavier live weight.
Fertility	DtC	days	Genetic differences between animals in the time from the start of the joining period (i.e. when the female is introduced to a bull) until subsequent calving.	Lower EBVs indicate shorter time to calving.
	SS	cm	Genetic differences between animals in scrotal circumference at 400 days of age.	Higher EBVs indicate larger scrotal circumference.
Carcase	CWT	kg	Genetic differences between animals in hot standard carcase weight at 750 days of age.	Higher EBVs indicate heavier carcase weight.
	EMA	cm ²	Genetic differences between animals in eye muscle area at the 12/13th rib site in a 400 kg carcase.	Higher EBVs indicate larger eye muscle area.
	Rib Fat	mm	Genetic differences between animals in fat depth at the 12/13th rib site in a 400 kg carcase.	Higher EBVs indicate more fat.
	P8 Fat	mm	Genetic differences between animals in fat depth at the P8 rump site in a 400 kg carcase.	Higher EBVs indicate more fat.
	RBY	%	Genetic differences between animals in boned out saleable meat from a 400 kg carcase.	Higher EBVs indicate higher yield.
	IMF	%	Genetic differences between animals in intramuscular fat (marbling) at the 12/13th rib site in a 400 kg carcase.	Higher EBVs indicate more intramuscular fat.
Feed/Temp.	NFI-F	kg/day	Genetic differences between animals in feed intake at a standard weight and rate of weight gain when animals are in a feedlot finishing phase.	Lower EBVs indicate more feed efficiency.
	Doc	%	Genetic differences between animals in temperament.	Higher EBVs indicate better temperament.
Structure	Claw Set	score	Genetic differences in claw set structure (shape and evenness of claws).	Lower EBVs indicate less curl of the claw set.
	Foot Angle	score	Genetic differences in foot angle (strength of pastern, depth of heel).	Lower EBVs indicate more heel depth.
	Leg Angle	score	Genetic differences in rear leg structure when viewed from the side (angle at front of the hock).	Lower EBVs indicate a less angular leg angle.
Selection Index	\$A	\$	Genetic differences between animals in net profitability per cow joined in a typical commercial self replacing herd using Angus bulls. This selection index is not specific to a particular market end-point, but identifies animals that will improve overall net profitability in the majority of commercial, self replacing, grass and grain finishing beef production systems.	Higher selection indexes indicate greater profitability.
	\$A-L	\$	The \$A-L index is similar to the \$A index but is modelled on a production system where feed is surplus to requirements for the majority of the year, or the cost of supplying additional feed when animal feed requirements increase is low. While the \$A aims to maintain mature cow weight, the \$A-L does not aim to limit the increase in mature cow weight as there is minimal cost incurred if the feed maintenance requirements of the female breeding herd increase as a result of selection decisions.	Higher selection indexes indicate greater profitability.

Glatz Black Angus "SA Cattleman's Bull Sale" EBV Quick Reference Table

Animal	Calving Ease		Birth			Growth			Maternal			Fertility			Carcass			Temp	
	CEDir	CEDtrs	GL	BWT	200	400	600	MCW	Milk	SS	CWT	EMA	RIB	P8	RBV	IMF	Doc		
1	SJQ23U247	+1.8	-1.4	-2.4	+3.8	+54	+103	+139	+115	+18	+3.5	+73	+4.1	+3.5	+3.6	-1.8	+4.1	+19	
2	SJQ23U256	+6.4	+4.8	-7.4	+3.4	+60	+109	+150	+129	+26	+2.1	+96	+5.5	-3.0	-1.7	+0.4	+2.1	+10	
3	SJQ23U235	+4.6	+7.0	-6.1	+5.7	+62	+108	+143	+137	+15	+3.0	+80	+5.8	-1.5	-3.3	+1.2	+0.9	+27	
4	SJQ23U334	-0.9	+3.0	-2.0	+5.6	+62	+109	+146	+137	+17	+3.2	+85	+4.1	-1.4	-2.1	+0.8	+0.5	+28	
5	SJQ23U238	+2.3	+2.4	-2.8	+4.9	+59	+105	+141	+124	+18	+2.0	+76	+5.7	+0.0	-2.3	+0.3	+2.4	+20	
6	SJQ23U225	+5.6	+7.8	-3.0	+4.4	+53	+89	+108	+85	+15	+2.5	+81	+11.0	-0.1	-2.4	+1.3	+1.6	+30	
7	SJQ23U209	+5.0	+3.5	-5.9	+3.3	+50	+93	+132	+115	+18	+1.7	+71	+6.4	+0.5	-0.8	+0.2	+2.3	+18	
8	SJQ23U277	+0.1	+4.5	-2.2	+6.2	+64	+112	+147	+128	+21	+2.4	+94	+5.2	+0.4	-1.3	+0.6	+0.4	+17	
9	SJQ23U265	+2.5	+5.4	-6.7	+4.3	+62	+112	+146	+140	+22	+2.5	+90	+4.1	-0.4	-0.5	+0.1	+1.4	+13	
10	SJQ23U269	-	-	-	-	-	-	-	-	-	-	-	-	-	-	-	-	TBC	
11	SJQ23U214	+3.6	+7.1	-7.9	+3.2	+53	+92	+110	+98	+17	+1.8	+62	+7.6	+1.8	-1.4	+0.7	+1.7	+15	
12	SJQ23U226	+1.8	+3.3	-6.2	+5.8	+59	+101	+126	+125	+13	+2.2	+76	+5.6	-0.8	-3.8	+0.9	+1.5	+22	
13	SJQ23U255	+2.5	+3.7	-5.6	+4.3	+64	+110	+145	+130	+21	+2.4	+94	+5.9	+0.0	-0.2	-0.4	+3.5	+20	
14	SJQ23U223	+4.2	+3.4	-5.8	+4.1	+55	+97	+124	+130	+17	+0.4	+77	+5.3	-0.4	-1.0	+0.2	+1.6	+25	
15	SJQ23U306	-7.3	-2.0	+1.5	+7.9	+62	+110	+152	+131	+18	+1.9	+91	+5.5	-1.3	-0.5	+0.3	+1.6	+33	
16	SJQ23U213	+5.8	+6.2	-7.0	+2.8	+52	+97	+125	+110	+17	+2.2	+65	+7.4	+1.2	+0.0	+0.5	+2.1	+19	
17	SJQ23U278	+3.1	+3.0	-2.6	+4.1	+58	+104	+134	+124	+16	+1.5	+76	+8.2	-0.7	-1.4	+1.0	+0.6	+24	
18	SJQ23U279	-1.9	+0.6	-3.0	+7.0	+68	+115	+152	+147	+17	+1.8	+93	+7.9	-0.9	-1.3	+1.2	-0.4	+34	
19	SJQ23U326	+2.0	-2.1	-2.0	+5.2	+50	+90	+118	+110	+21	+3.3	+69	+6.6	+0.3	-1.1	+0.5	+1.8	+14	
20	SJQ23U362	+4.0	+3.2	-5.1	+2.8	+51	+89	+115	+107	+22	+3.7	+70	+4.1	+0.9	+0.0	+0.0	+1.8	+25	
21	SJQ23U275	+8.6	+5.1	-3.0	+0.9	+50	+90	+115	+88	+20	+3.6	+63	+2.1	+1.2	+0.0	-0.4	+3.1	+19	
22	SJQ23U298	-1.9	+4.3	-1.6	+4.6	+60	+102	+125	+117	+17	+1.7	+80	+6.1	-0.5	-0.3	+0.6	+0.9	+25	
23	SJQ23U2990	+0.7	+3.5	-7.0	+4.9	+47	+91	+118	+111	+16	+1.8	+64	+3.0	+0.4	+0.9	+0.4	+1.3	+17	
24	SJQ23U286	+0.4	+2.2	-5.2	+4.2	+51	+97	+123	+110	+13	+2.6	+69	+2.6	+0.6	+2.2	-0.6	+3.2	+21	
25	SJQ23U254	+1.3	+6.2	-5.6	+4.2	+58	+100	+130	+127	+14	+2.1	+81	+3.4	-2.7	-3.4	+0.4	+1.7	+26	
26	SJQ23U342	+0.0	+1.6	-0.9	+6.1	+60	+108	+146	+131	+20	+2.3	+90	+5.5	-0.7	-1.3	+0.2	+1.8	+21	
27	SJQ23U293	+0.7	+0.8	-2.6	+4.8	+53	+93	+113	+103	+12	+2.5	+63	+4.5	-1.7	-3.0	+1.1	+1.1	+33	
28	SJQ23U237	-6.0	+0.2	-1.5	+6.1	+52	+93	+120	+99	+18	+1.9	+71	+5.4	-2.3	-2.1	+0.9	+1.0	+29	
29	SJQ23U231	+0.9	+4.8	-5.7	+5.6	+64	+111	+141	+128	+19	+0.7	+88	+7.1	+0.3	+0.2	+0.3	+1.7	+25	
30	SJQ23U289	+3.5	+5.2	-3.5	+3.2	+51	+88	+117	+99	+18	+1.8	+69	+2.5	-0.5	-1.7	+0.0	+2.3	+23	

Animal	Calving Ease		Birth			Growth			Maternal			Fertility			Carcass			Temp	
	CEDir	CEDtrs	GL	BWT	200	400	600	MCW	Milk	SS	CWT	EMA	RIB	P8	RBV	IMF	Doc		
1	SJQ23U247	+1.8	-1.4	-2.4	+3.8	+54	+103	+139	+115	+18	+3.5	+73	+4.1	+3.5	+3.6	-1.8	+4.1	+19	
2	SJQ23U256	+6.4	+4.8	-7.4	+3.4	+60	+109	+150	+129	+26	+2.1	+96	+5.5	-3.0	-1.7	+0.4	+2.1	+10	
3	SJQ23U235	+4.6	+7.0	-6.1	+5.7	+62	+108	+143	+137	+15	+3.0	+80	+5.8	-1.5	-3.3	+1.2	+0.9	+27	
4	SJQ23U334	-0.9	+3.0	-2.0	+5.6	+62	+109	+146	+137	+17	+3.2	+85	+4.1	-1.4	-2.1	+0.8	+0.5	+28	
5	SJQ23U238	+2.3	+2.4	-2.8	+4.9	+59	+105	+141	+124	+18	+2.0	+76	+5.7	+0.0	-2.3	+0.3	+2.4	+20	
6	SJQ23U225	+5.6	+7.8	-3.0	+4.4	+53	+89	+108	+85	+15	+2.5	+81	+11.0	-0.1	-2.4	+1.3	+1.6	+30	
7	SJQ23U209	+5.0	+3.5	-5.9	+3.3	+50	+93	+132	+115	+18	+1.7	+71	+6.4	+0.5	-0.8	+0.2	+2.3	+18	
8	SJQ23U277	+0.1	+4.5	-2.2	+6.2	+64	+112	+147	+128	+21	+2.4	+94	+5.2	+0.4	-1.3	+0.6	+0.4	+17	
9	SJQ23U265	+2.5	+5.4	-6.7	+4.3	+62	+112	+146	+140	+22	+2.5	+90	+4.1	-0.4	-0.5	+0.1	+1.4	+13	
10	SJQ23U269	-	-	-	-	-	-	-	-	-	-	-	-	-	-	-	-	TBC	
11	SJQ23U214	+3.6	+7.1	-7.9	+3.2	+53	+92	+110	+98	+17	+1.8	+62	+7.6	+1.8	-1.4	+0.7	+1.7	+15	
12	SJQ23U226	+1.8	+3.3	-6.2	+5.8	+59	+101	+126	+125	+13	+2.2	+76	+5.6	-0.8	-3.8	+0.9	+1.5	+22	
13	SJQ23U255	+2.5	+3.7	-5.6	+4.3	+64	+110	+145	+130	+21	+2.4	+94	+5.9	+0.0	-0.2	-0.4	+3.5	+20	
14	SJQ23U223	+4.2	+3.4	-5.8	+4.1	+55	+97	+124	+130	+17	+0.4	+77	+5.3	-0.4	-1.0	+0.2	+1.6	+25	
15	SJQ23U306	-7.3	-2.0	+1.5	+7.9	+62	+110	+152	+131	+18	+1.9	+91	+5.5	-1.3	-0.5	+0.3	+1.6	+33	
16	SJQ23U213	+5.8	+6.2	-7.0	+2.8	+52	+97	+125	+110	+17	+2.2	+65	+7.4	+1.2	+0.0	+0.5	+2.1	+19	
17	SJQ23U278	+3.1	+3.0	-2.6	+4.1	+58	+104	+134	+124	+16	+1.5	+76	+8.2	-0.7	-1.4	+1.0	+0.6	+24	
18	SJQ23U279	-1.9	+0.6	-3.0	+7.0	+68	+115	+152	+147	+17	+1.8	+93	+7.9	-0.9	-1.3	+1.2	-0.4	+34	
19	SJQ23U326	+2.0	-2.1	-2.0	+5.2	+50	+90	+118	+110	+21	+3.3	+69	+6.6	+0.3	-1.1	+0.5	+1.8	+14	
20	SJQ23U362	+4.0	+3.2	-5.1	+2.8	+51	+89	+115	+107	+22	+3.7	+70	+4.1	+0.9	+0.0	+0.0	+1.8	+25	
21	SJQ23U275	+8.6	+5.1	-3.0	+0.9	+50	+90	+115	+88	+20	+3.6	+63	+2.1	+1.2	+0.0	-0.4	+3.1	+19	
22	SJQ23U298	-1.9	+4.3	-1.6	+4.6	+60	+102	+125	+117	+17	+1.7	+80	+6.1	-0.5	-0.3	+0.6	+0.9	+25	
23	SJQ23U2990	+0.7	+3.5	-7.0	+4.9	+47	+91	+118	+111	+16	+1.8	+64	+3.0	+0.4	+0.9	+0.4	+1.3	+17	
24	SJQ23U286	+0.4	+2.2	-5.2	+4.2	+51	+97	+123	+110	+13	+2.6	+69	+2.6	+0.6	+2.2	-0.6	+3.2	+21	
25	SJQ23U254	+1.3	+6.2	-5.6	+4.2	+58	+100	+130	+127	+14	+2.1	+81	+3.4	-2.7	-3.4	+0.4	+1.7	+26	
26	SJQ23U342	+0.0	+1.6	-0.9	+6.1	+60	+108	+146	+131	+20	+2.3	+90	+5.5	-0.7	-1.3	+0.2	+1.8	+21	
27	SJQ23U293	+0.7	+0.8	-2.6	+4.8	+53	+93	+113	+103	+12	+2.5	+63	+4.5	-1.7	-3.0	+1.1	+1.1	+33	
28	SJQ23U237	-6.0	+0.2	-1.5	+6.1	+52	+93	+120	+99	+18	+1.9	+71	+5.4	-2.3	-2.1	+0.9	+1.0	+29	
29	SJQ23U231	+0.9	+4.8	-5.7	+5.6	+64	+111	+141	+128	+19	+0.7	+88	+7.1	+0.3	+0.2	+0.3	+1.7	+25	
30	SJQ23U289	+3.5	+5.2	-3.5	+3.2	+51	+88	+117	+99	+18	+1.8	+69	+2.5	-0.5	-1.7	+0.0	+2.3	+23	



TACE Transformation & Analytics
Intelligent Analytics for Everyone

Glatz Black Angus "SA Cattleman's Bull Sale" EBV Quick Reference Table

Animal	Calving Ease		Birth			Growth			Maternal			Fertility			Carcass			Temp	
	CEDir	CEDtrs	GL	BWT	200	400	600	MCW	Milk	SS	CWT	EWA	RIB	P8	RBV	IMF	Doc		
31	SJQ23U274	+3.7	+4.9	-5.9	+4.7	+60	+104	+128	+124	+17	+82	+4.0	-1.2	-2.0	+0.4	+1.3	+19		
32	SJQ23U257	+6.4	+6.4	-4.3	+3.5	+54	+93	+116	+98	+20	+76	+8.5	-1.0	-2.2	+1.5	+0.5	+17		
33	SJQ23U246	+6.0	+2.8	-7.9	+1.8	+45	+83	+103	+81	+22	+61	+5.4	-1.3	-0.6	+0.3	+2.3	+22		
34	SJQ23U260	+1.4	+4.6	-4.4	+5.0	+55	+93	+115	+108	+17	+68	+7.5	-1.6	-3.5	+1.8	+0.2	+31		
35	SJQ23U271	-1.4	+0.3	+0.4	+4.9	+50	+93	+122	+93	+19	+74	+9.1	-1.2	-0.2	+1.3	+0.8	+29		
36	SJQ23U297	+1.4	+5.9	-1.2	+3.8	+53	+95	+123	+125	+19	+79	+2.3	+0.7	+0.8	+0.2	+0.9	+33		
37	SJQ23U341	-1.9	-0.4	-2.9	+5.9	+63	+105	+142	+122	+15	+79	+5.4	-1.1	-2.0	+0.5	+1.0	+31		
38	SJQ23U267	+4.0	+2.3	-3.6	+2.8	+46	+88	+110	+89	+16	+64	+5.0	+2.0	+4.3	-0.2	+2.5	+14		
39	SJQ23U281	+4.6	+6.4	-2.3	+3.5	+42	+74	+90	+73	+15	+53	+5.1	+0.8	-0.2	+1.2	+0.1	+20		
40	SJQ23U314	+1.6	+4.2	-4.9	+4.3	+54	+92	+113	+95	+11	+53	+7.3	-1.3	-2.3	+0.8	+1.6	+17		
41	SJQ23U321	+3.2	+7.1	-6.9	+3.0	+55	+91	+114	+89	+11	+65	+8.3	-1.7	-2.0	+0.7	+2.1	+21		
42	SJQ23U290	-0.7	+5.2	-3.7	+4.0	+56	+100	+120	+122	+18	+79	+4.6	-0.8	-1.6	+0.7	+0.6	+13		
43	SJQ23U249	-2.0	-2.5	-3.0	+6.5	+55	+104	+141	+135	+18	+77	+4.0	-1.0	-0.2	+0.3	+1.4	+10		
44	SJQ23U308	+4.1	+4.2	-7.6	+3.9	+50	+87	+112	+100	+21	+70	+9.4	+1.2	-0.3	+0.6	+1.4	+22		
45	SJQ23U204	+7.5	+4.6	-7.1	+2.8	+45	+76	+91	+67	+19	+55	+6.8	+1.4	+0.4	+1.0	+1.0	+21		
46	SJQ23U227	+7.6	+5.1	-8.2	+2.1	+58	+98	+130	+101	+18	+73	+5.9	+1.1	+0.1	-0.3	+2.0	+19		
47	SJQ23U283	+6.4	+6.1	-5.2	+1.3	+46	+85	+104	+91	+19	+62	+4.4	+0.2	+0.3	+0.4	+1.7	+24		
48	SJQ23U284	+5.9	+0.7	-2.2	+2.2	+44	+77	+96	+70	+15	+51	+6.1	+0.6	-1.1	+0.9	+1.8	+12		
49	SJQ23U317	-3.9	+2.4	-6.0	+4.9	+56	+88	+102	+81	+8	+54	+7.5	-2.7	-3.0	+1.0	+1.6	+21		
50	SJQ23U346	+7.0	+7.5	-4.6	+2.2	+48	+91	+116	+108	+16	+62	+6.7	+0.1	-0.1	+0.6	+1.9	+37		
51	SJQ23U349	+4.5	+0.3	-6.3	+4.5	+48	+85	+109	+105	+18	+61	+8.0	+0.4	-1.1	+0.9	+0.8	+16		

TACE		CEDirs		GL		BWT		200		400		600		MCW		Milk		SS		CWT		EWA		RIB		P8		RBV		IMF		Doc	
+2.3	+3.2	-4.6	+3.9	+52	+94	+121	+103	+17	+2.2	+69	+6.6	+0.1	-0.2	+0.4	+0.8	+16	+2.5	+21															



Glatz Black Angus



Son of Main Event



Black Angus Blockbuster U5
Sold for \$16,000 in the
Glatz Black Angus 2024 Spring Sale

Son of Main Event

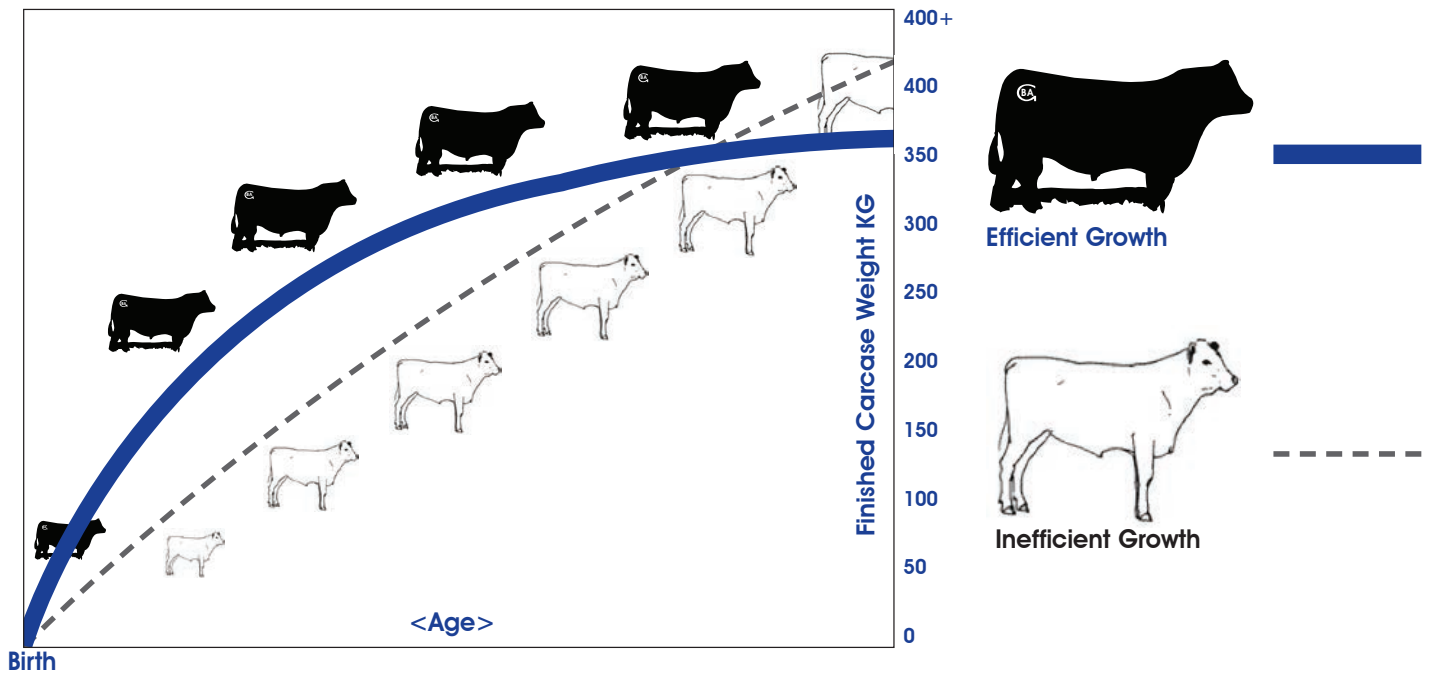


Alpine Rip Wheeler
(Sire – Karoo Main Event)
Sold for \$75,000 in 2021



KAROO Main Event

“Main Event is a proven sire who is breed elite for Foot Structure, Positive Fat and Calving Ease. Main Event sons have sold to \$75,000. Glatz Black Angus have used Main Event for 3 x consecutive years and expect his daughters to perform particularly well when in production”



The most efficient form of growth — Dimension + Maturity Pattern + Function

**2135 Avenue Range Road,
Avenue Range SA 5273**

How to get there...

1km east of Avenue Range fronting the main Lucindale - Kingston Rd.

Travel Times

- Hamilton 2.5 hours
- Horsham 2.5 hours
- Murray Bridge 2.5 hours

Accommodation

- Penola – Coonawarra Motor Lodge, 08 8737 2364.
- Kingston SE – Lacedpede Bay Motel, 08 8767 2444.
- Robe – Lake View Motel / Apartments, 08 87682100.
- Naracoorte – Country Roads Motor Inn, 08 8762 3900.



Buyers Instruction Slip

PURCHASER DETAILS

Name: T/A:

Mailing Address: Postcode:

Email: UHF:

Telephone: Mobile:

PIC: Angus Herd ID: Signature:

DELIVERY INSTRUCTIONS

Lots Purchased:

Insurance: Y N Type of Cover:

Property Directions / Roadside Address:

.....

.....

Map No.: Map Reference:

Special Instructions:

.....

.....

ACCOUNT SETTLEMENT

The name and signature of your agent is required.

Agent:

Agent Telephone: Signature:



Baldridge 38 Special

"38 Special has been used at Glatz Black Angus for 4 consecutive joinings due to his Calving Ease, Explosive Growth, Sensible Mature Cow Weight, High EMA and particularly Good Feet. Furthermore, 2 x sons were retained at Glatz Black Angus in 2024."

All in the one brand...

* Problem Free Bulls * Proven Performance * Proven Carcase Quality

